

# Signal Automaton 6+S

The ZÖLLNER Signal Automaton 6+S is an automatic signal control for all ZÖLLNER whistles with electric signal release. It is programmed to release automatically the maneuvering and warning signals according to Rule 35 (a, b, c, e, g) of the Colregs 1972 and additionally the SOS distress signal.

## Essential information:

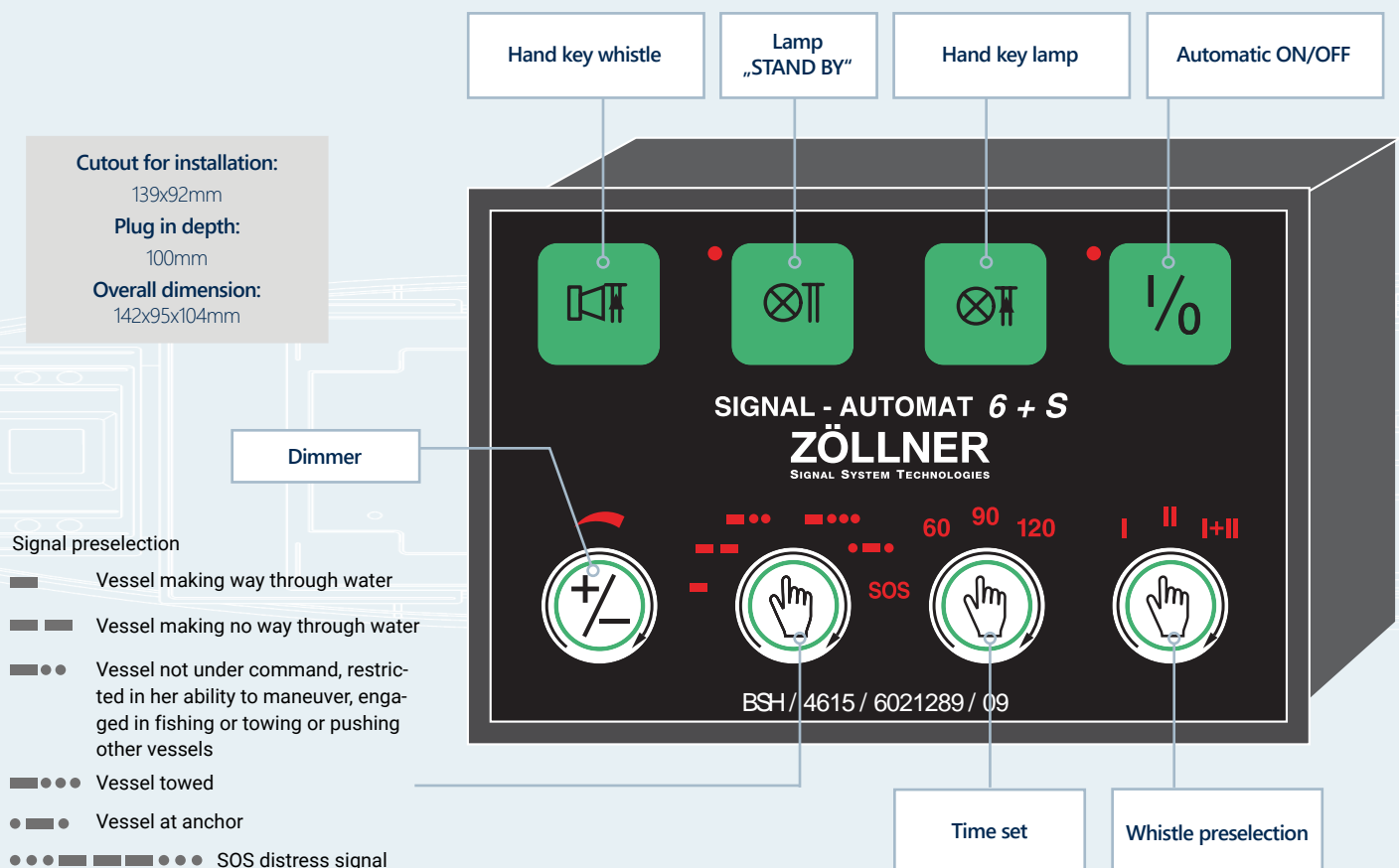
- » type approved by the BSH
- » automatic and manual signal release
- » sound and light signals
- » ready for connection of one or two whistles, one maneuver signal lamp and separate push-button keys
- » signal intervals adjustable
- » dimmer for key illumination

## Advantages:

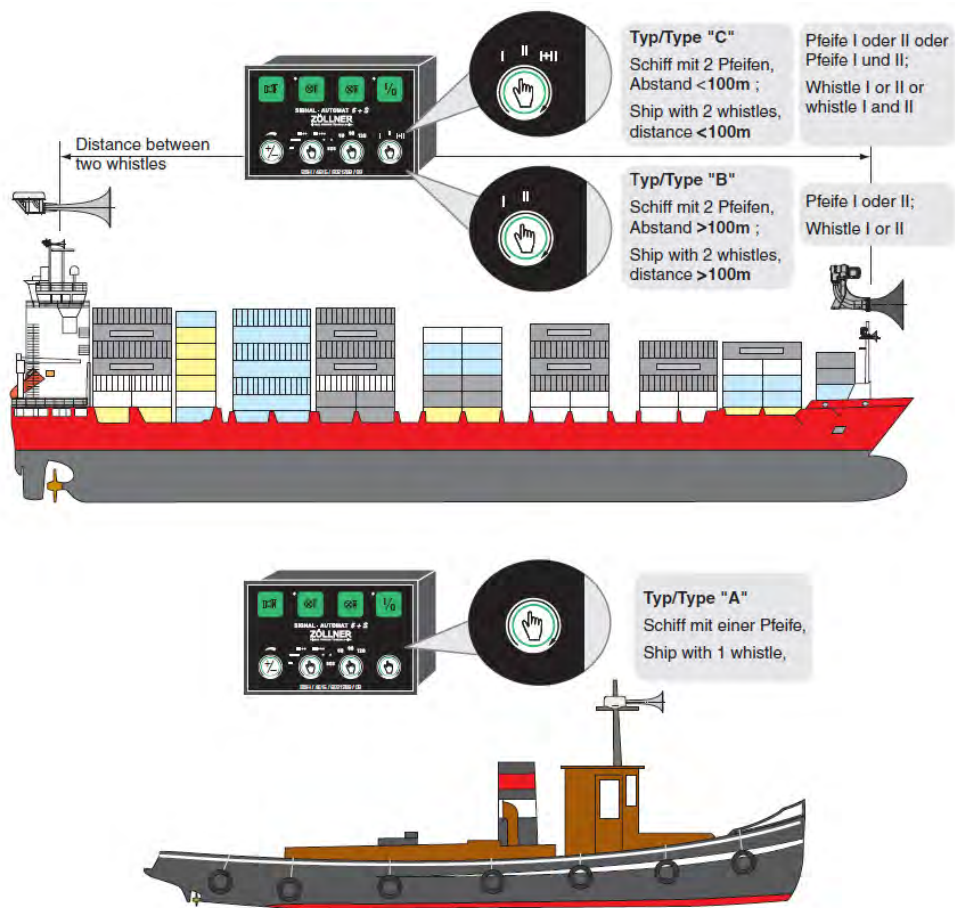
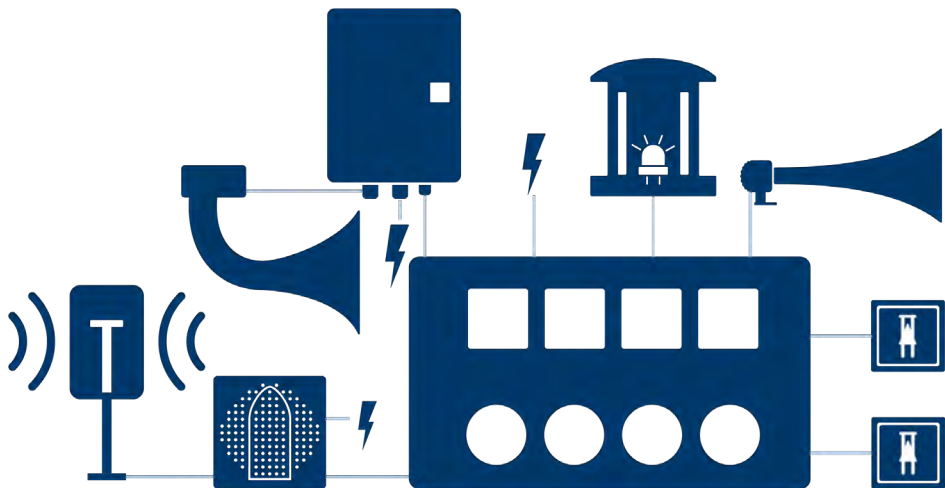
- » latest technical standard
- » best material and workmanship - made in Germany
- » functional membrane keyboard
- » self-explanatory symbols
- » pluggable, therefore easy installation or repair
- » maintenance-free

## Easy Installation:

- » in the center of the bridge console
- » system voltage AC 1phase or 24 V DC
- » no special tools required



System Example



TYPE	VOLTAGE	POWER CONSUMPTION	TYPE APPROVAL	SAFE DISTANCE TO STANDARD-MAGNETIC-COMPASS	SAFE DISTANCE TO STEERING-MAGNETIC-COMPASS	WEIGHT	PROTECTION TYPE
A,B,C	24 V DC 115 V AC 230 V AC	max. 110 W Standby 4,95 W	✓	0,45 m	0,3 m	0,7 kg	IP 23

06100090EN4 • 11/22 • Subject to alteration!