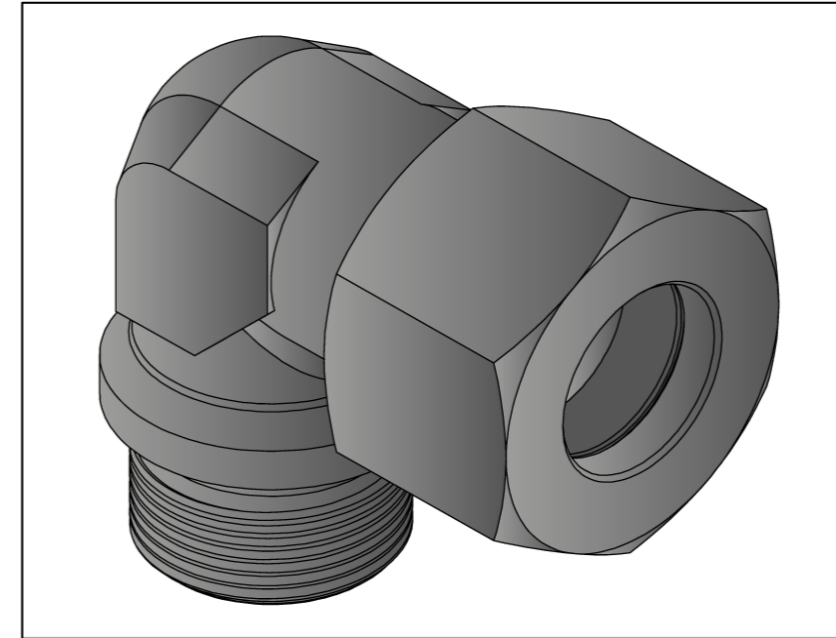
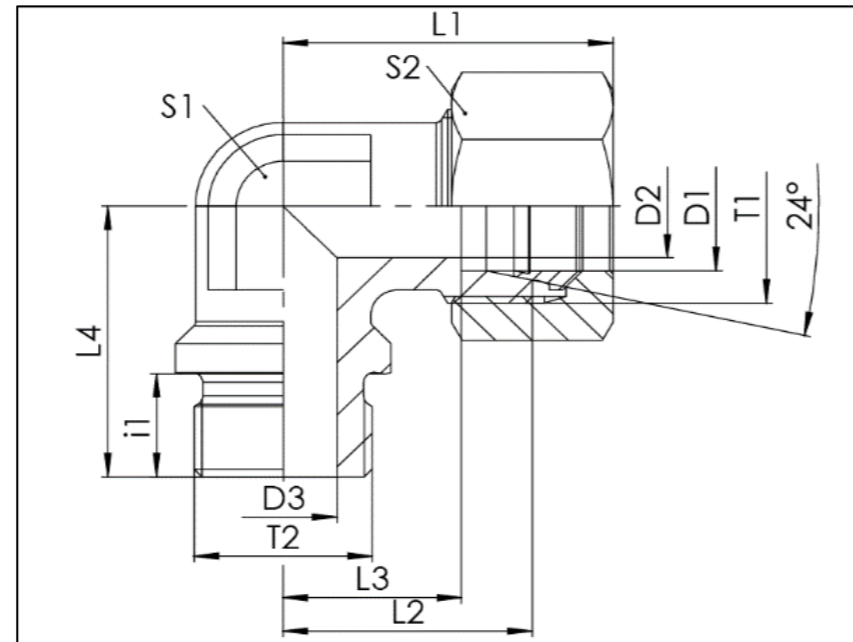


WEV-R-zyl.

BSPP AG - Schneidringanschluss / BSPP-m - Cutting Ring Connection

- Winkeleinschraubverschraubung mit 24° Konus
- L- und S-Reihe
- Abdichtung durch metallische Dichtkante ISO 1179-4 Form B
- Gewinde: M / BSPP
- DIN 2353 / ISO 8434-1 / DIN 1179-1 Form B

- 90° elbow connector with 24° cone end
- L- and S-series
- metallic sealing edge ISO 1179-4 Form B
- thread: M / BSPP
- DIN 2353 / ISO 8434-1 / DIN 1179-1 Form B



WEV-R-zyl.

Baureihe	D1	T1	T2	M _A * (T2)	D2	D3	L1	L2	L3	L4	i1	S1	S2	PN	Gewicht Stutzen <i>weight fitting</i>	Gesamt- gewicht <i>total weight</i>	Bezeichnung <i>Name</i>	Artikel Nr. Stutzen <i>Article No. fitting</i>	Artikel-Nr. Kompletteile <i>Article No. complete part</i>
series	mm			Nm	mm	mm	mm	mm	mm	mm	mm	mm	mm	bar	g	g			
L	22	M30x2	R3/4 zyl.	180	19	18	45,5	35	27,5	42	16	27	36	160	186	283	WEV 22L R3/4 zyl.	108383	105685
	28	M36x2	R3/4 zyl.	180	23	18	49	38	30,5	46	16	36	41	160	325	439	WEV 28L R3/4 zyl.	108406	105706
	28	M36x2	R1 zyl.	330	24	23	49	38	30,5	48	18	36	41	160	316	429	WEV 28L R1 zyl.	108404	105705
	35	M45x2	R1.1/4 zyl.	540	30	30	57	45	34,5	54	20	41	50	160	474	648	WEV 35L R1.1/4 zyl.	108423	105723
S	42	M52x2	R1.1/2 zyl.	630	36	36	63	51	40	61	22	50	60	160	699	962	WEV 42L R1.1/2 zyl.	108439	105739
	20	M30x2	R1/2 zyl.	130	16	12	49	37	26,5	42	14	27	36	250	230	351	WEV 20S R1/2 zyl.	108375	105676
	20	M30x2	R3/4 zyl.	270	16	16	49	37	26,5	42	16	27	36	250	230	351	WEV 20S R3/4 zyl.	108373	105675
	25	M36x2	R1 zyl.	340	20	20	55	42	30	48	18	36	46	250	408	642	WEV 25S R1 zyl.	108395	105696
	30	M42x2	R1.1/4 zyl.	540	25	25	63	49	35,5	54	20	41	50	160	650	909	WEV 30S R1.1/4 zyl.	108415	105715
38	M52x2	R1.1/2 zyl.	700	32	32	72,5	57	41	61	22	50	60	160	935	1310	WEV 38S R1.1/2 zyl.	108431	105731	

* Einschraubgewinde geschmiert und in Stahl verschraubt / Thread lubricated and mounted in steel

Technische Änderungen vorbehalten / Subject to technical alteration