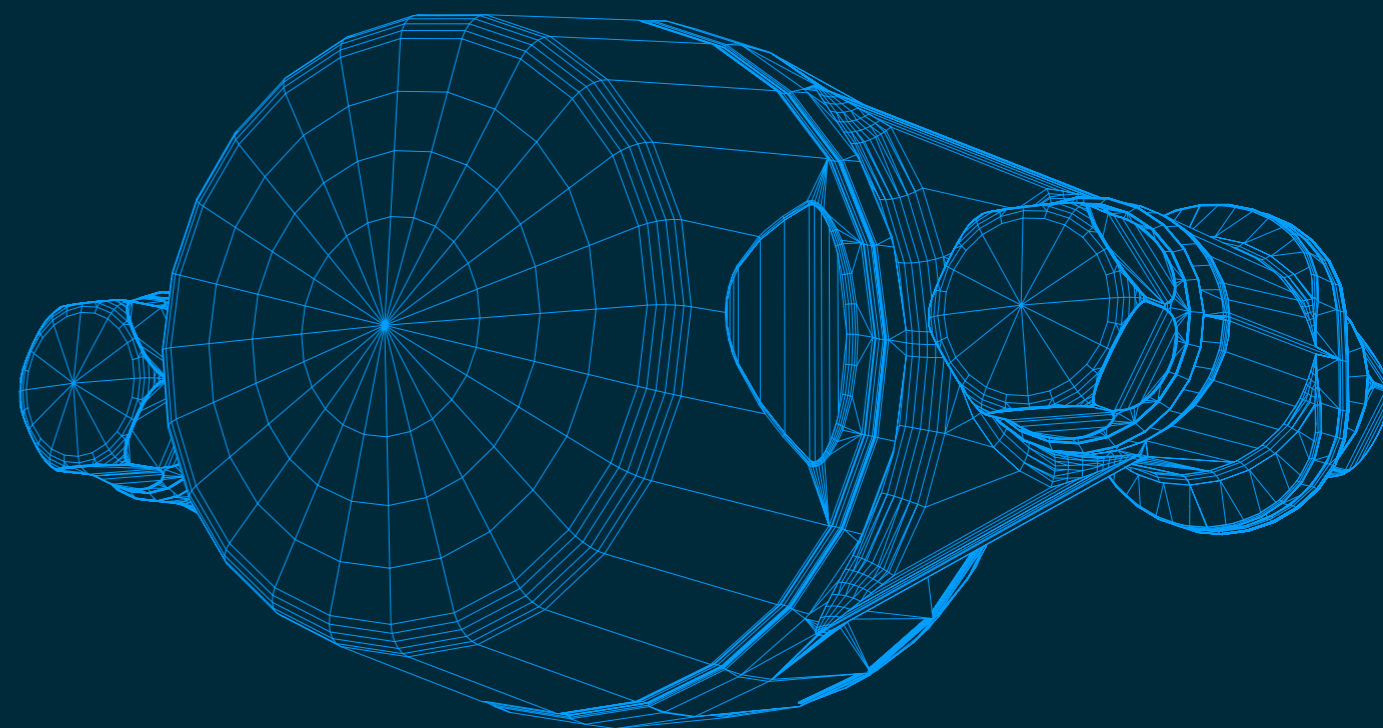


**NGI HYGIENIC COMPONENTS IS THE
WORLD'S LEADING MANUFACTURER OF CERTIFIED
INDUSTRIAL HYGIENIC COMPONENTS.**

**WE CONTINUOUSLY DEVELOP AND
INNOVATE OUR PRODUCTS AND CONCEPTS
TO SATISFY THE REQUIREMENTS OF OUR CUSTOMERS.**



**HYGIENIC BEARING
HOUSES**



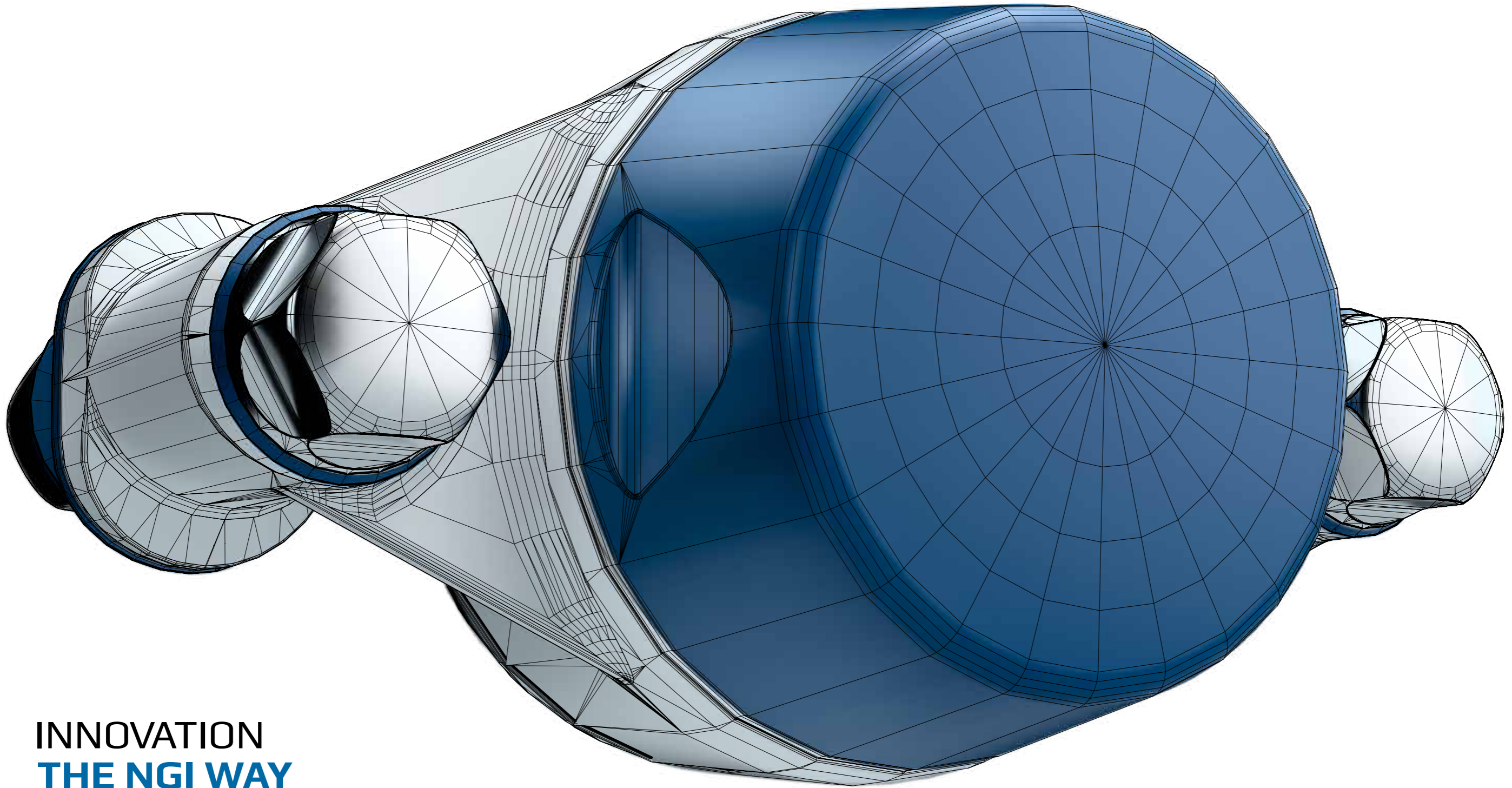
YOUR SPECIFIC MARKET CONSULTANTS

NGI has grown to become the global market leader for hygienic components due to our continuously high involvement in our customer's businesses and needs.

Our deep insight into the various sectors within the machine manufacturing and food processing industries makes us a value-adding partner with focus on consulting and knowledge sharing.

Today, NGI is represented in more than 50 countries and is rapidly expanding. As an NGI customer you will always be able to talk to a country-specific consultant with local language skills.

www.ngi-global.com/contact/employees



INNOVATION THE NGI WAY

NGI is an organization in constant motion. We continuously optimize our products as well as our processes. The objective is to always remain a modern, dynamic and value-creating partner.

At NGI we are not focused on competing with other companies...
we determine the market standard.

This fact holds true when it comes to consulting, innovation and the characteristics and qualities of our individual products.

Therefore, NGI always contributes to improving our customers' competitiveness.



BEARING HOUSES



INNOVATIVE & RELIABLE

We provide the optimal solution for your application

The bearing houses are certified and designed to comply with EHEDG, 3-A and USDA rules and guidelines and are specifically designed to minimize risks of contamination and enhance food safety.

The bearing house has a patented waterproof encasement that seals the bearing blocking out dirt and bacteria as well as extending the lifetime of the bearing. The bearings are lubricated for life eliminating the risk of spreading contaminated grease during high-pressure cleaning.

The shaft insertion in to the bearing house has a new groundbreaking patented design that enables a waterproof seal to the shaft despite an installation angle of up to 3 degrees misalignment.



Plug&Play installation



Enhanced food safety



A complete hygienic design minimizing risks of contamination



Reduce energy consumption, minimize water usage, minimize use of cleaning detergents.



Reduce operating and maintenance costs

Go to www.ngi-global.com/bearinghouses to read more and see our product range.



CERTIFIED HYGIENIC BEARING HOUSES



THE ONLY **PATENTED BEARING HOUSE** IN THE WORLD **HYGIENICALLY DESIGNED AND CERTIFIED** BY **EHEDG, 3-A AND USDA STANDARDS** WITH EXTREME EASY ACCESS FOR CLEANING FROM ALL ANGLES.

THE BEARING HOUSE PROVIDE A **PATENTED WATERPROOF SEALING** THAT ALLOWS **3 DEGREES MISALIGNMENT** AND CAN BE EQUIPPED WITH A **HIGH-PERFORMANCE CERAMIC BEARING** LUBRICATED FOR LIFE WITH **4-8 TIMES EXTENDED LIFETIME**

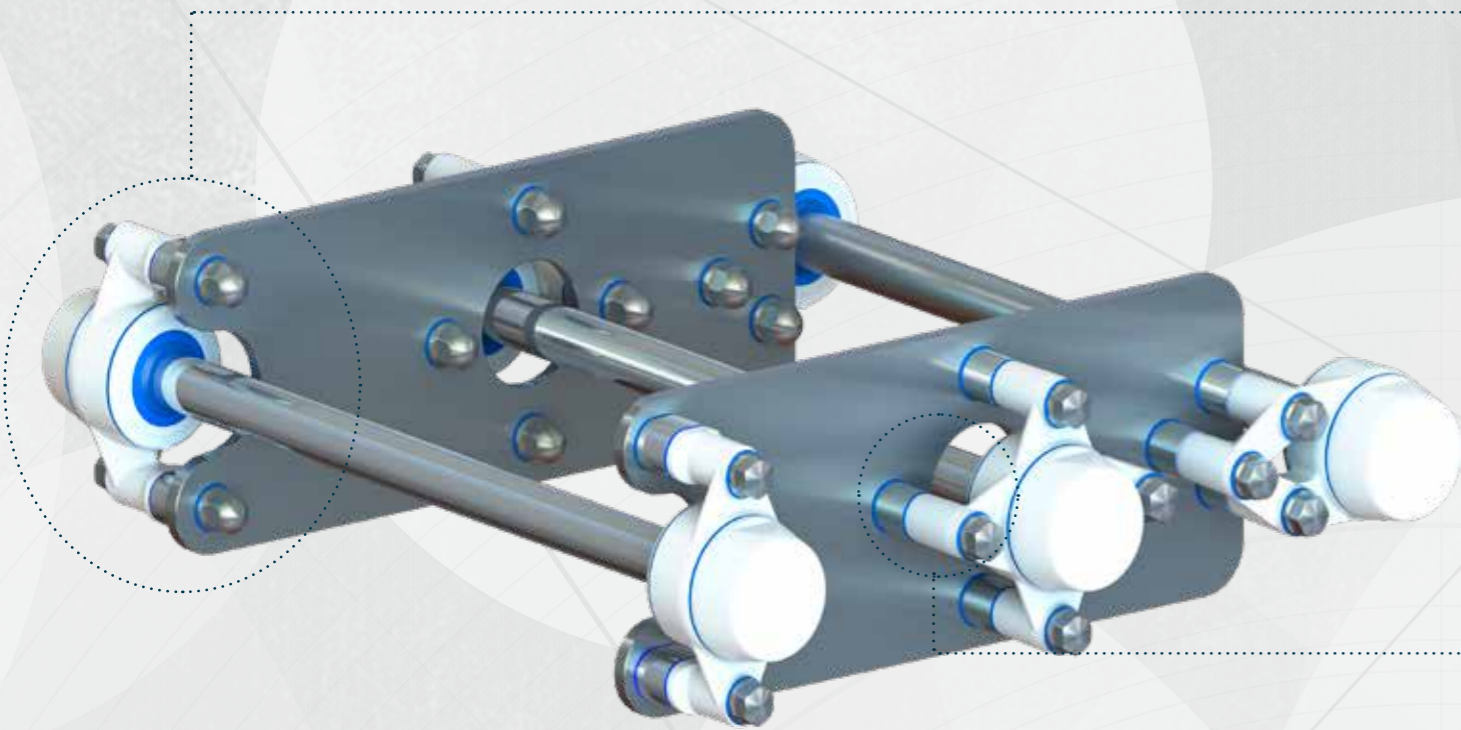
- X-RAY DETECTABLE
- NGI INNOVATION
- REDUCE COSTS
- FOOD SAFETY
- PLUG&PLAY INSTALLATION
- REDUCE ENERGY CONSUMPTION



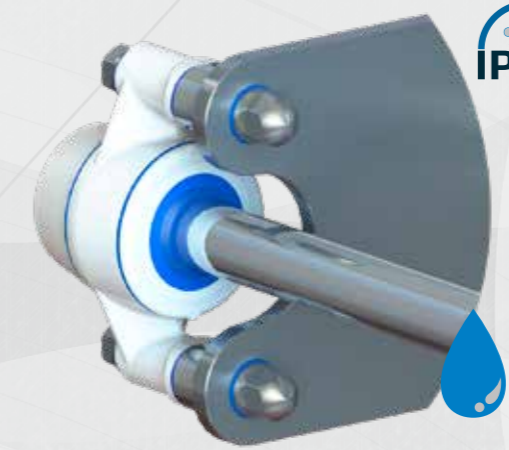
- CERTIFIED HYGIENIC
- MINIMIZED CLEANING TIME
- MINIMIZED WATER USAGE

CERTIFIED HYGIENIC BEARING HOUSES WITH SPACERS

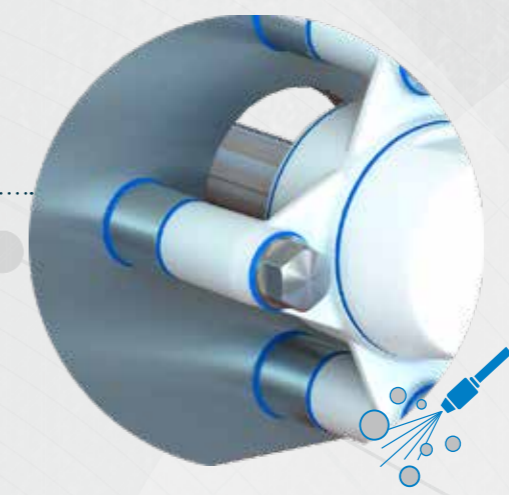
-  CERTIFIED HYGIENIC
-  MINIMIZED CLEANING TIME
-  MINIMIZED WATER USAGE



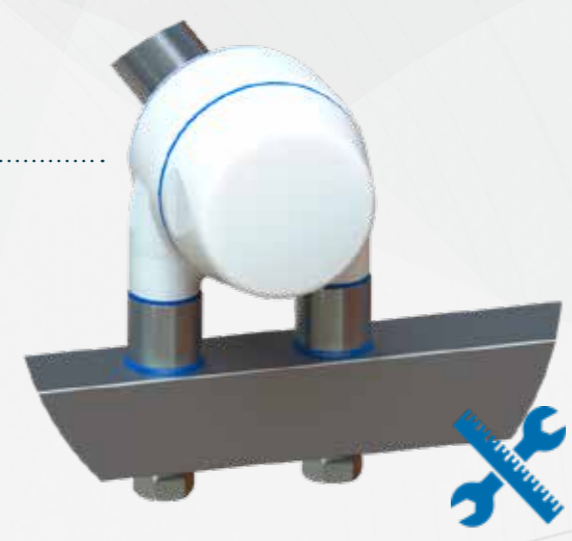
CERTIFIED HYGIENIC BEARING HOUSES WITH SPACERS



EASY CLEANING FROM ALL ANGLES
 NGI has created a bearing house that is extremely easy to clean from all angles as water can easily reach all surfaces. All transitions and connections between materials are hygienically sealed with blue sealings.



HYGIENIC SPACERS
 A high focus on hygienic design ensures that the bearing house can be cleaned behind and around the shaft and furthermore, NGI offers hygienic spacers to increase the distance to machines and equipment to over an inch as recommended by USDA.



INSTALLATION
 Installation is easy and you will be able to use your usual procedure, however, as the bearing can be turned inside the house and covers are replaceable, the bearing house from NGI is far more flexible and can be mounted in more ways than traditional bearing houses.

CERTIFIED HYGIENIC BEARING HOUSES

NGI is the only manufacturer in the world of certified hygienic bearing houses designed to comply and certified by EHEDG, 3-A and USDA standards. The product group consists of five different types of bearing houses fitted with ceramic or as standard stainless steel bearings. The bearing houses are designed according to ISO3228_2013 and fit insert bearings that meet ISO9628_2006. This also applies to outside dimensions and it is therefore, a perfect hygienic substitution for an unhygienic solution.

Choosing bearing houses from NGI optimized with ceramic spherical ball bearings you will be able to reach optimal quality, robustness and stability. The bearing houses are lubrication free which minimizes maintenance and the need for grease, thereby, minimizing the risk of contaminating the product. Our bearing houses are IP69K-certified.

Product Group Features



- Easy access for cleaning from all angles
- Flexible mounting - can accommodate initial misalignment
- Can be supplied with hygienic bolts and nuts as standard. More sizes available upon request.
- Can accommodate temperatures -35°C to +110°C depending on insert bearing
- Unique patented seal system, waterproof at more than 3° misalignment
- Produced in sturdy grilamid with co-moulded FDA-approved TPU seals
- Fitted with stainless steel bearing or ceramic bearing.
- Tested and conforms to ISO9628_2006 & ISO3228_2013
- The housing is able to withstand the same dynamic and static radial load as insert bearings
- Housing made from grilamid, a high strength High-performance PA12 and optimized for detection in the food and pharmaceutical industries
- Suitable for heavier or alternating axial load depending on the way it is locked onto the shaft
- For further information on load capacities look at bearing data sheet or contact NGI



XB2FC

Special Features

- 2-hole flange bearing house
- Mounted parallel to shaft direction
- Shaft diameter 20 mm - 40 mm
- Can be supplied with M10 certified hygienic nuts and bolts for maximum hygienic safety

17



XBPBC

Special Features

- Pillow block bearing house
- Mounted perpendicularly to shaft direction
- Shaft diameter 25 mm - 30 mm
- Can be supplied with M10 certified hygienic nuts and bolts for maximum hygienic safety

23



XB3FC

Special Features

- 3-hole flange bearing house
- Mounted parallel to shaft direction
- Shaft diameter 20 mm - 30 mm
- Can be supplied with M10 certified hygienic nuts and bolts for maximum hygienic safety

19



XBTBC

Special Features

- Tapped base bearing house
- Mounted perpendicularly to shaft direction
- Shaft diameter 25 mm - 30 mm
- Can be supplied with M10 certified hygienic nuts and bolts for maximum hygienic safety

25



XB4FC

Special Features

- 4-hole flange bearing house
- Mounted parallel to shaft direction
- Shaft diameter 20 mm - 40 mm
- Can be supplied with M10 certified hygienic nuts and bolts for maximum hygienic safety

21



DECLARATION OF CONFORMITY

This declaration of conformity lists all the directives and standards that NGI adheres to. This ensures that products from NGI are always in compliance with currently valid requirements.

29

CERTIFIED HYGIENIC BEARING HOUSE XB2FC

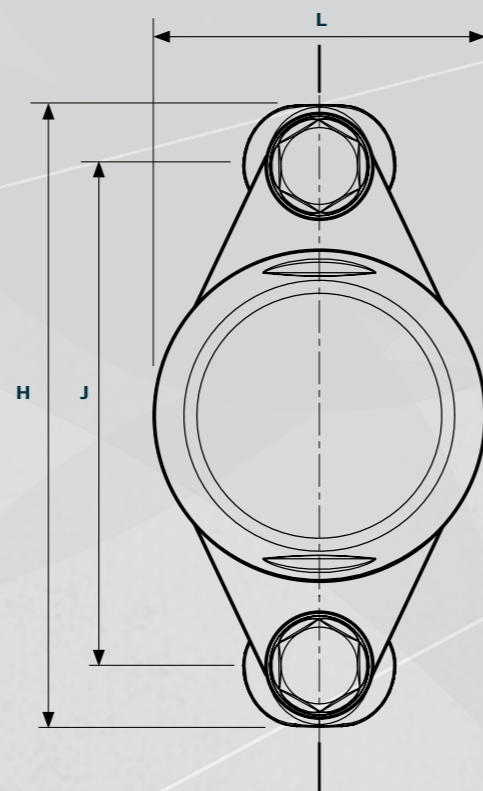
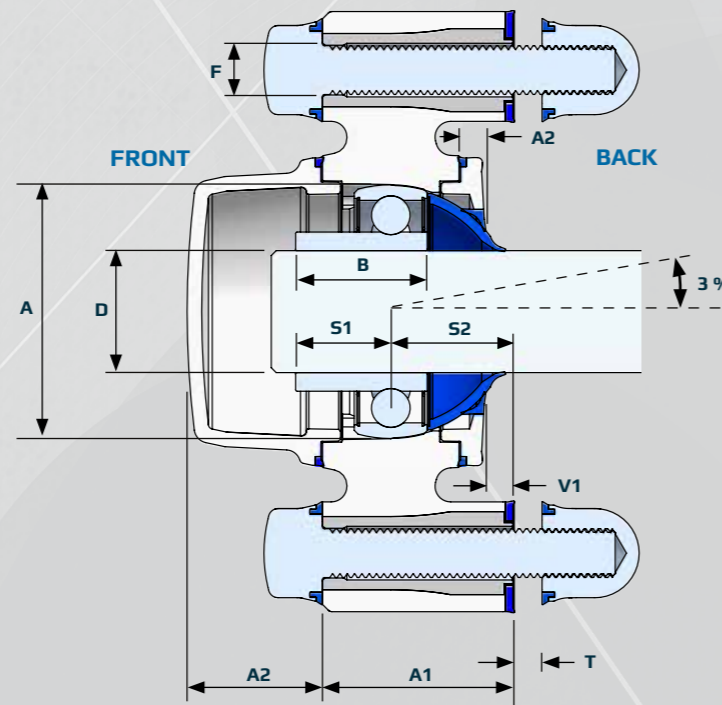
- CERTIFIED HYGIENIC
- MINIMIZED CLEANING TIME
- MINIMIZED WATER USAGE

The design and patent protected XB2FC 2-hole flange bearing house is the optimal choice for machinery and equipment that has to comply with strict hygiene requirements.

The XB2FC bearing house is mounted parallel to shaft direction

The XB2FC is designed to provide easy access for cleaning from all angles. We recommend that you choose a bearing house with NGI's hygienic nuts and bolts for maximum hygienic safety.

The XB2FC meets the requirements of EC 1935/2004, EC 10/2011, EC 2023/2006 and FDA.



CERTIFIED HYGIENIC BEARING HOUSES XB2FC



PRODUCT CODE	BEARING HOUSE	BEARING TYPE	FRONT COVER	BACK COVER	BOLT (OPTIONAL)
EXAMPLE	XB2FC52-	SSB2500-	CL(W)-	OS(W)-	BXHM1050



BEARING HOUSE



SIZE A [mm]	SHAFT DIAMETER D [mm]	V1 [mm]	J [mm]	F [mm]	H [mm]	L [mm]	A1 [mm]	S2 [mm]	ITEM CODE
47	20	7,5	90	10,2	114,2	57,8	36	24	XB2FC47
52	25	6,4	99	10,2	123	65,8	39	25	XB2FC52
62	30	6,6	116,5	10,2	144,9	79,7	41,5	27	XB2FC62
72	35	7,1	130	12,2	160,4	91,7	46,5	30	XB2FC72
80	40	7,4	143,5	12,2	175,9	101,6	50	32	XB2FC80

BEARING TYPE**



BEARING BALL MATERIAL	SHAFT DIAMETER D [mm]	WIDTH B [mm]	DISTANCE S1 [mm]	STATIC LOAD RATING CO [N]	DYNAMIC LOAD RATING C [N]	ITEM CODE
STAINLESS STEEL W. SCREWS	20*	25	18	-	-	SSB2000
STAINLESS STEEL W. SCREWS	25	27	19,5	5970	11310	SSB2500
STAINLESS STEEL W. SCREWS	30	30	22	8640	15730	SSB3000
STAINLESS STEEL W. SCREWS	35*	34	24,5	-	-	SSB3500
STAINLESS STEEL W. SCREWS	40*	37	26,5	-	-	SSB4000

** The above bearing is the most common bearing - stainless steel with screws. We have, however, four types of bearings - stainless steel or ceramic hybrid with screws or with locking collar. Find our complete assortment of bearings on page 28.

COVER



SIZE A [mm]	SHAFT DIAMETER D [mm]	OS [Open small] A2	OM [Open Medium] A2	CM [Closed Medium] A2	CL [Closed Large] A2	ITEM CODE	COLOR CODE - SEE BELOW
47	20	4,5	14,6	16,7	-		
52	25	4,6	14,6	17,2	27,5		
62	30	5,9	20,4	23,3	35,7		
72	35	6,4	19,5	23,2	-		
80	40	6,6	22,3	26,2	-		

NUT AND BOLT



Our bearing houses can be supplied with certified hygienic bolts and nuts. More bolt lengths are available. Find the relevant assortment of bolts and nuts for bearing houses on page 29.

COLOR BEARING HOUSES

COLOR	COLOR CODE
WHITE	(W)
BLUE	(B)
BLACK	(S)



* The above marked bearings will not be available until summer/autumn 2021, however, you can already now place an order for the products and we will ship them as soon as the bearing houses are on stock.
Misalignment angle = +/- 3°

CERTIFIED HYGIENIC BEARING HOUSES XB3FC

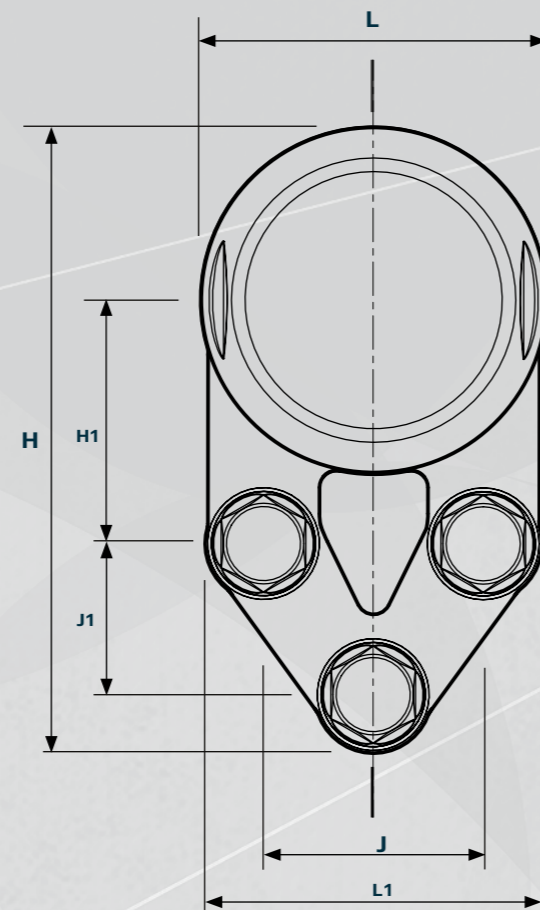
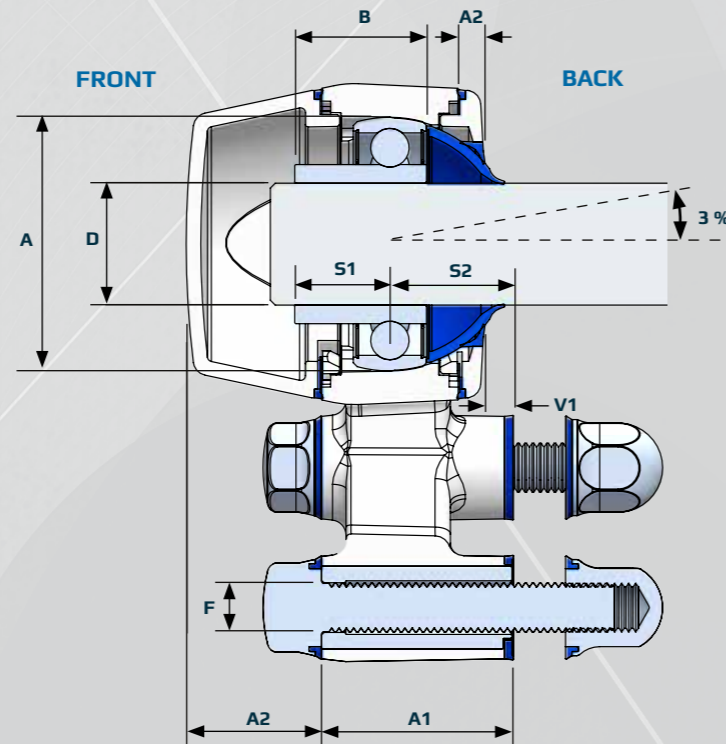
- CERTIFIED HYGIENIC
- MINIMIZED CLEANING TIME
- MINIMIZED WATER USAGE

The design and patent protected XB3FC 3-hole flange bearing house is the optimal choice for machinery and equipment that has to comply with strict hygiene requirements.

The XB3FC bearing house is mounted parallel to shaft direction.

The XB3FC is designed to provide easy access for cleaning from all angles. We recommend that you choose a bearing house with NGI's hygienic nuts and bolts for maximum hygienic safety.

The XB3FC meets the requirements of EC 1935/2004, EC 10/2011, EC 2023/2006 and FDA.



CERTIFIED HYGIENIC BEARING HOUSES XB3FC



PRODUCT CODE	BEARING HOUSE	BEARING TYPE	FRONT COVER	BACK COVER	BOLT (OPTIONAL)
EXAMPLE	XB3FC52-	SSB2500-	CL(W)-	OS(W)-	BXHM1050



BEARING HOUSE



SIZE A [mm]	SHAFT DIAMETER D [mm]	V1 [mm]	J [mm]	J1 [mm]	F [mm]	H [mm]	H1 [mm]	L [mm]	L1 [mm]	A1 [mm]	S2 [mm]	ITEM CODE
47	20	7,5	38	22	10,2	104,8	43	57,7	60	36	24	XB3FC47
52	25	6,4	41,5	28,5	10,2	118,3	46	65,6	63,5	39	25	XB3FC52
62	30	6,6	47,5	32	10,2	137,3	52,5	79,6	72,3	41,5	27	XB3FC62
72	35	-	-	-	-	-	-	-	-	-	-	XB3FC72
80	40	-	-	-	-	-	-	-	-	-	-	XB3FC80

BEARING TYPE**



BEARING BALL MATERIAL	SHAFT DIAMETER D [mm]	WIDTH B [mm]	DISTANCE S1 [mm]	STATIC LOAD RATING CO [N]	DYNAMIC LOAD RATING C [N]	ITEM CODE
STAINLESS STEEL W. SCREWS	20*	25	18	-	-	SSB2000
STAINLESS STEEL W. SCREWS	25	27	19,5	5970	11310	SSB2500
STAINLESS STEEL W. SCREWS	30	30	22	8640	15730	SSB3000
STAINLESS STEEL W. SCREWS	-	-	-	-	-	SSB3500
STAINLESS STEEL W. SCREWS	-	-	-	-	-	SSB4000

** The above bearing is the most common bearing - stainless steel with screws. We have, however, four types of bearings - stainless steel or ceramic hybrid with screws or with locking collar. Find our complete assortment of bearings on page 28.

COVER



SIZE A [mm]	SHAFT DIAMETER D [mm]	OS [Open small] A2	OM [Open Medium] A2	CM [Closed Medium] A2	CL [Closed Large] A2	ITEM CODE
47	20	4,5	14,6	16,7	-	
52	25	4,6	14,6	17,2	27,5	
62	30	5,9	20,4	23,3	35,7	
72	35	6,4	19,5	23,2	-	
80	40	6,6	22,3	26,2	-	

NUT AND BOLT



Our bearing houses can be supplied with certified hygienic bolts and nuts. More bolt lengths are available. Find the relevant assortment of bolts and nuts for bearing houses on page 29.

COLOR BEARING HOUSES

COLOR	COLOR CODE
WHITE	(W)
BLUE	(B)
BLACK	(S)



* The above marked bearings will not be available until summer/autumn 2021, however, you can already now place an order for the products and we will ship them as soon as the bearing houses are on stock.
Misalignment angle = +/- 3°

CERTIFIED HYGIENIC BEARING HOUSES XB4FC

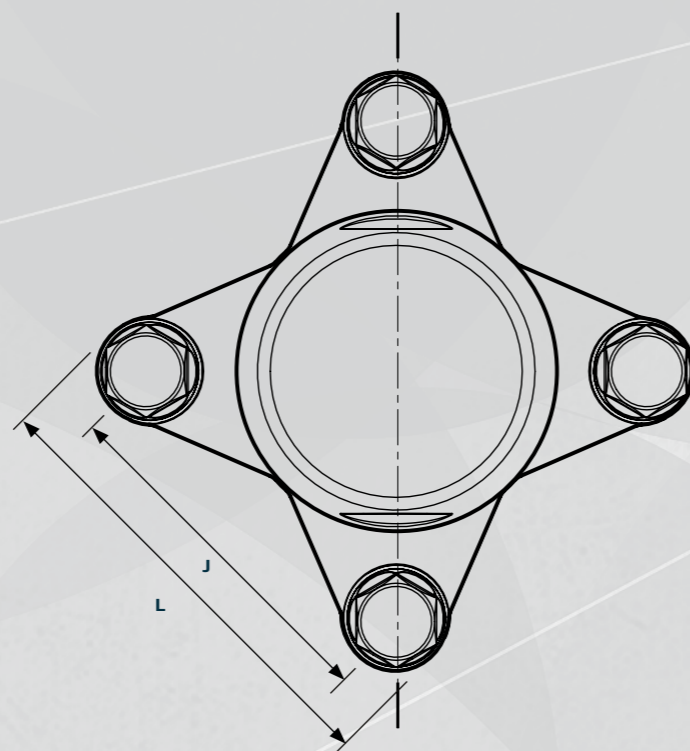
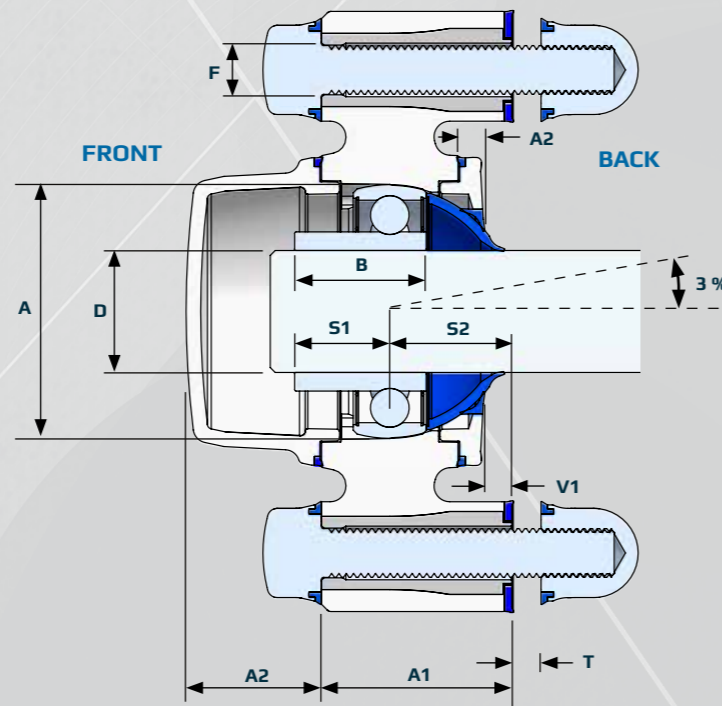
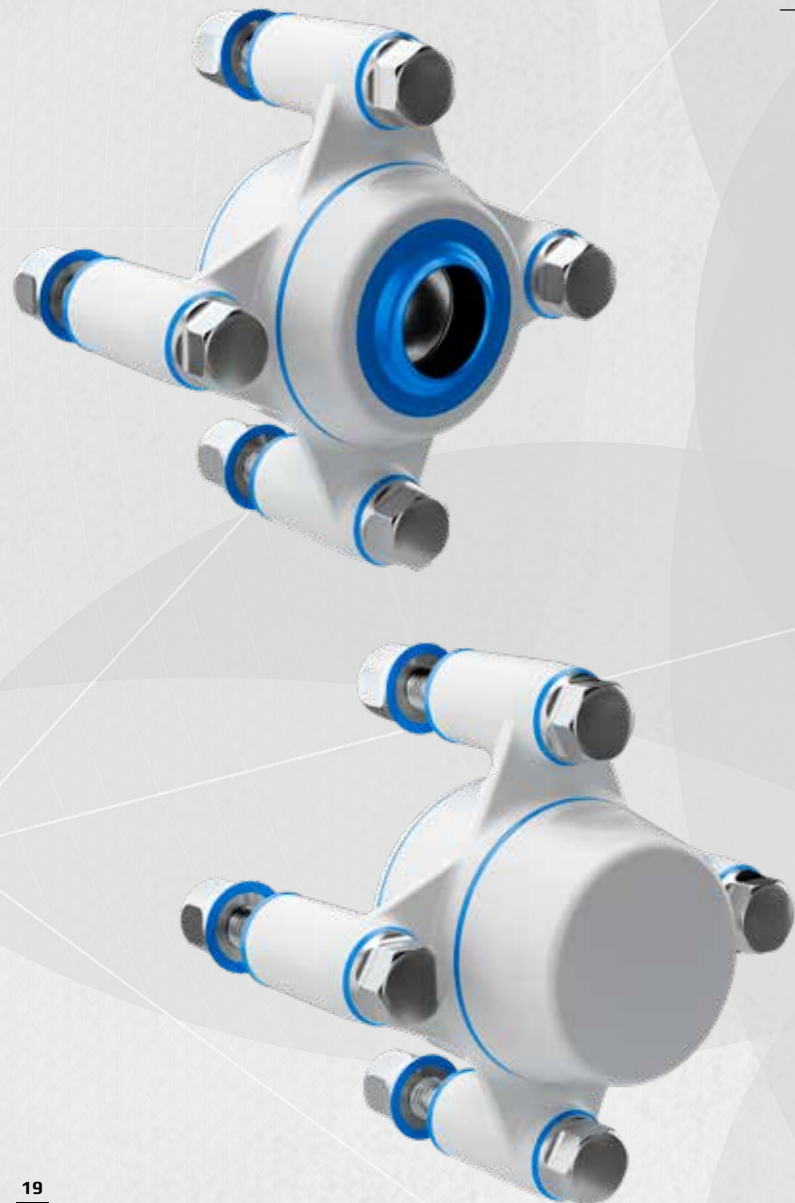
- CERTIFIED HYGIENIC
- MINIMIZED CLEANING TIME
- MINIMIZED WATER USAGE

The design and patent protected XB4FC 4-hole flange bearing house is the optimal choice for machinery and equipment that has to comply with strict hygiene requirements.

The XB4FC bearing house is mounted parallel to shaft direction.

The XB4FC is designed to provide easy access for cleaning from all angles. We recommend that you choose a bearing house with NGI's hygienic nuts and bolts for maximum hygienic safety.

The XB4FC meets the requirements of EC 1935/2004, EC 10/2011, EC 2023/2006 and FDA.



CERTIFIED HYGIENIC BEARING HOUSES XB4FC



PRODUCT CODE	BEARING HOUSE	BEARING TYPE	FRONT COVER	BACK COVER	BOLT (OPTIONAL)
EXAMPLE	XB4FC52-	SSB2500-	CL(W)-	OS(W)-	BXHM1050

BEARING HOUSE

SIZE A [mm]	SHAFT DIAMETER D [mm]	V1 [mm]	J [mm]	F [mm]	L [mm]	A1 [mm]	S2 [mm]	ITEM CODE
47	20	7,5	63,5	10,2	84,7	36	24	XB4FC47
52	25	6,4	70	10,2	92	39	25	XB4FC52
62	30	6,6	82,5	10,2	109,1	41,5	27	XB4FC62
72	35	7,1	92	12,2	119,2	46,5	30	XB4FC72
80	40	7,4	101,5	12,2	130,8	50	32	XB4FC80

BEARING TYPE**

BEARING BALL MATERIAL	SHAFT DIAMETER D [mm]	WIDTH B [mm]	DISTANCE S1 [mm]	STATIC LOAD RATING CO [N]	DYNAMIC LOAD RATING C [N]	ITEM CODE
STAINLESS STEEL W. SCREWS	20*	25	18	-	-	SSB2000
STAINLESS STEEL W. SCREWS	25	27	19,5	5970	11310	SSB2500
STAINLESS STEEL W. SCREWS	30	30	22	8640	15730	SSB3000
STAINLESS STEEL W. SCREWS	35*	34	24,5	-	-	SSB3500
STAINLESS STEEL W. SCREWS	40*	37	26,5	-	-	SSB4000

** The above bearing is the most common bearing - stainless steel with screws. We have, however, four types of bearings - stainless steel or ceramic hybrid with screws or with locking collar. Find our complete assortment of bearings on page 28.

COVER

SIZE A [mm]	SHAFT DIAMETER D [mm]	OS [Open small] A2	OM [Open Medium] A2	CM [Closed Medium] A2	CL [Closed Large] A2	ITEM CODE
47	20	4,5	14,6	16,7	-	
52	25	4,6	14,6	17,2	27,5	
62	30	5,9	20,4	23,3	35,7	
72	35	6,4	19,5	23,2	-	
80	40	6,6	22,3	26,2	-	

NUT AND BOLT



Our bearing houses can be supplied with certified hygienic bolts and nuts. More bolt lengths are available. Find the relevant assortment of bolts and nuts for bearing houses on page 29.

COLOR BEARING HOUSES

COLOR	COLOR CODE
WHITE	(W)
BLUE	(B)
BLACK	(S)



* The above marked bearings will not be available until summer/autumn 2021, however, you can already now place an order for the products and we will ship them as soon as the bearing houses are on stock.
Misalignment angle = +/- 3°

CERTIFIED HYGIENIC BEARING HOUSES XBPBC

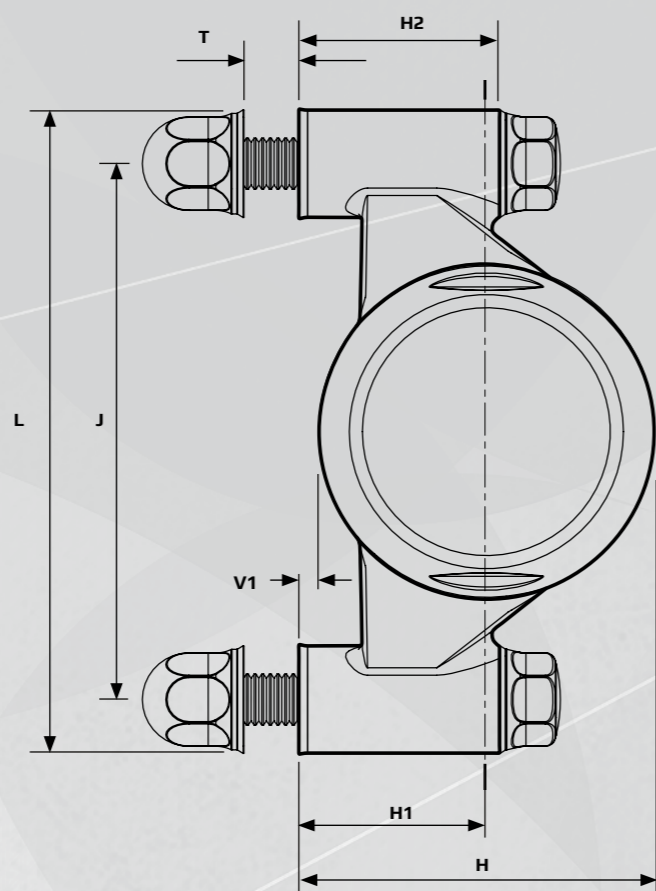
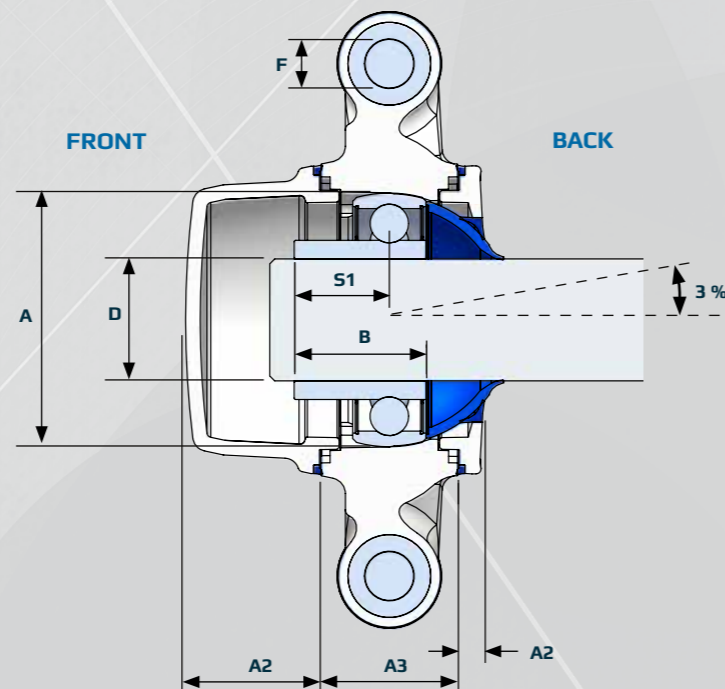
- CERTIFIED HYGIENIC
- MINIMIZED CLEANING TIME
- MINIMIZED WATER USAGE

The design and patent protected XBPBC 2-hole block full bearing house is the optimal choice for machinery and equipment that has to comply with strict hygiene requirements.

The XBPBC bearing house is mounted perpendicularly to shaft direction

The XBPBC is designed to provide easy access for cleaning from all angles. We recommend that you choose a bearing house with NGI's hygienic nuts and bolts for maximum hygienic safety.

The XBPBC meets the requirements of EC 1935/2004, EC 10/2011, EC 2023/2006 and FDA.



BEARING HOUSE



BEARING TYPE**



COVER



NUT AND BOLT



COLOR BEARING HOUSES



CERTIFIED HYGIENIC BEARING HOUSES XBPBC



PRODUCT CODE	BEARING HOUSE	BEARING TYPE	FRONT COVER	BACK COVER	BOLT (OPTIONAL)
EXAMPLE	XBPBC25-	SSB2500-	CL(W)-	OS(W)-	BXHM1060

SIZE A [mm]	SHAFT DIAMETER D [mm]	V1 [mm]	J [mm]	F [mm]	H [mm]	H1 [mm]	H2 [mm]	L [mm]	A3 [mm]	ITEM CODE
47	20	-	-	-	-	-	-	-	-	XBPBC47
52	25	3,6	105	10,2	69,4	36,5	39	126	28	XBPBC52
62	30	3	121	10,2	82,8	42,9	41,5	146	29	XBPBC62
72	35	-	-	-	-	-	-	-	-	XBPBC72
80	40	-	-	-	-	-	-	-	-	XBPBC80

BEARING BALL MATERIAL	SHAFT DIAMETER D [mm]	WIDTH B [mm]	DISTANCE S1 [mm]	STATIC LOAD RATING CO [N]	DYNAMIC LOAD RATING C [N]	ITEM CODE
STAINLESS STEEL W. SCREWS	-	-	-	-	-	SSB2000
STAINLESS STEEL W. SCREWS	25	27	19,5	5970	11310	SSB2500
STAINLESS STEEL W. SCREWS	30	30	22	8640	15730	SSB3000
STAINLESS STEEL W. SCREWS	-	-	-	-	-	SSB3500
STAINLESS STEEL W. SCREWS	-	-	-	-	-	SSB4000

** The above bearing is the most common bearing - stainless steel with screws. We have, however, four types of bearings - stainless steel or ceramic hybrid with screws or with locking collar. Find our complete assortment of bearings on page 28.

SIZE A [mm]	SHAFT DIAMETER D [mm]	OS [Open small] A2	OM [Open Medium] A2	CM [Closed Medium] A2	CL [Closed Large] A2	ITEM CODE	COLOR CODE - SEE BELOW
47	20	4,5	14,6	16,7	-		
52	25	4,6	14,6	17,2	27,5		
62	30	5,9	20,4	23,3	35,7		
72	35	6,4	19,5	23,2	-		
80	40	6,6	22,3	26,2	-		

Our bearing houses can be supplied with certified hygienic bolts and nuts. More bolt lengths are available. Find the relevant assortment of bolts and nuts for bearing houses on page 29.

COLOR	COLOR CODE
WHITE	(W)
BLUE	(B)
BLACK	(S)

* The above marked bearings will not be available until summer/autumn 2021, however, you can already now place an order for the products and we will ship them as soon as the bearing houses are on stock.
Misalignment angle = +/-3°

CERTIFIED HYGIENIC BEARING HOUSES XBTBC



CERTIFIED HYGIENIC



MINIMIZED CLEANING TIME



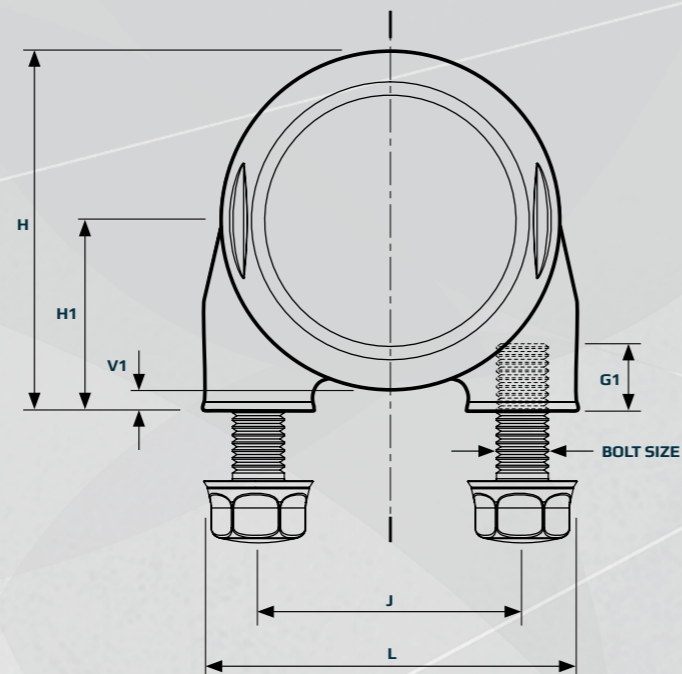
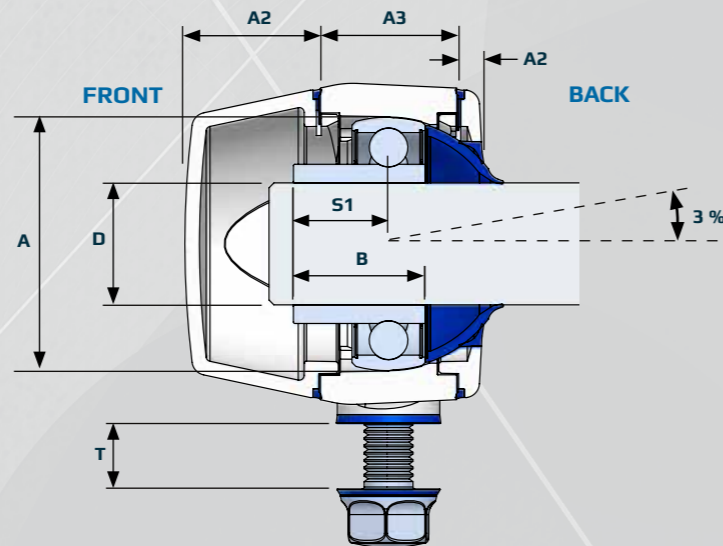
MINIMIZED WATER USAGE

The design and patent protected XBTBC block short-base bearing house is the optimal choice for machinery and equipment that has to comply with strict hygiene requirements.

The XBTBC bearing house is mounted perpendicularly to shaft direction

The XBTBC is designed to provide easy access for cleaning from all angles. We recommend that you choose a bearing house with NGI's hygienic nuts and bolts for maximum hygienic safety.

The XBTBC meets the requirements of EC 1935/2004, EC 10/2011, EC 2023/2006 and FDA.



CERTIFIED HYGIENIC BEARING HOUSES XBTBC



PRODUCT CODE	BEARING HOUSE	BEARING TYPE	FRONT COVER	BACK COVER	BOLT (OPTIONAL)
EXAMPLE	XBTBC25-	SSB2500-	CL(W)-	OS(W)-	BXHM1060



BEARING HOUSE



SIZE A [mm]	SHAFT DIAMETER D [mm]	J [mm]	H [mm]	H1 [mm]	L [mm]	G1 [mm]	A3 [mm]	ITEM CODE
47	20	-	-	-	-	-	-	XBTBC47
52	25	51	69,4	36,5	72,3	13	28	XBTBC52
62	30	76	82,7	42,9	100,9	13	29	XBTBC62
72	35	-	-	-	-	-	-	XBTBC72
80	40	-	-	-	-	-	-	XBTBC80

BEARING TYPE**



BEARING BALL MATERIAL	SHAFT DIAMETER D [mm]	WIDTH B [mm]	DISTANCE S1 [mm]	STATIC LOAD RATING CO [N]	DYNAMIC LOAD RATING C [N]	ITEM CODE
STAINLESS STEEL W. SCREWS	-	-	-	-	-	SSB2000
STAINLESS STEEL W. SCREWS	25	27	19,5	5970	11310	SSB2500
STAINLESS STEEL W. SCREWS	30	30	22	8640	15730	SSB3000
STAINLESS STEEL W. SCREWS	-	-	-	-	-	SSB3500
STAINLESS STEEL W. SCREWS	-	-	-	-	-	SSB4000

** The above bearing is the most common bearing - stainless steel with screws. We have, however, four types of bearings - stainless steel or ceramic hybrid with screws or with locking collar. Find our complete assortment of bearings on page 28.

COVER



SIZE A [mm]	SHAFT DIAMETER D [mm]	OS [Open small] A2	OM [Open Medium] A2	CM [Closed Medium] A2	CL [Closed Large] A2	ITEM CODE
47	20	4,5	14,6	16,7	-	
52	25	4,6	14,6	17,2	27,5	
62	30	5,9	20,4	23,3	35,7	
72	35	6,4	19,5	23,2	-	
80	40	6,6	22,3	26,2	-	

NUT AND BOLT



Our bearing houses can be supplied with certified hygienic bolts and nuts. More bolt lengths are available. Find the relevant assortment of bolts and nuts for bearing houses on page 29.

COLOR BEARING HOUSES

COLOR	COLOR CODE
WHITE	(W)
BLUE	(B)
BLACK	(S)



* The above marked bearings will not be available until summer/autumn 2021, however, you can already now place an order for the products and we will ship them as soon as the bearing houses are on stock.
Misalignment angle = +/-3°

STAINLESS STEEL OR CERAMIC HYBRID HYGIENIC BEARINGS

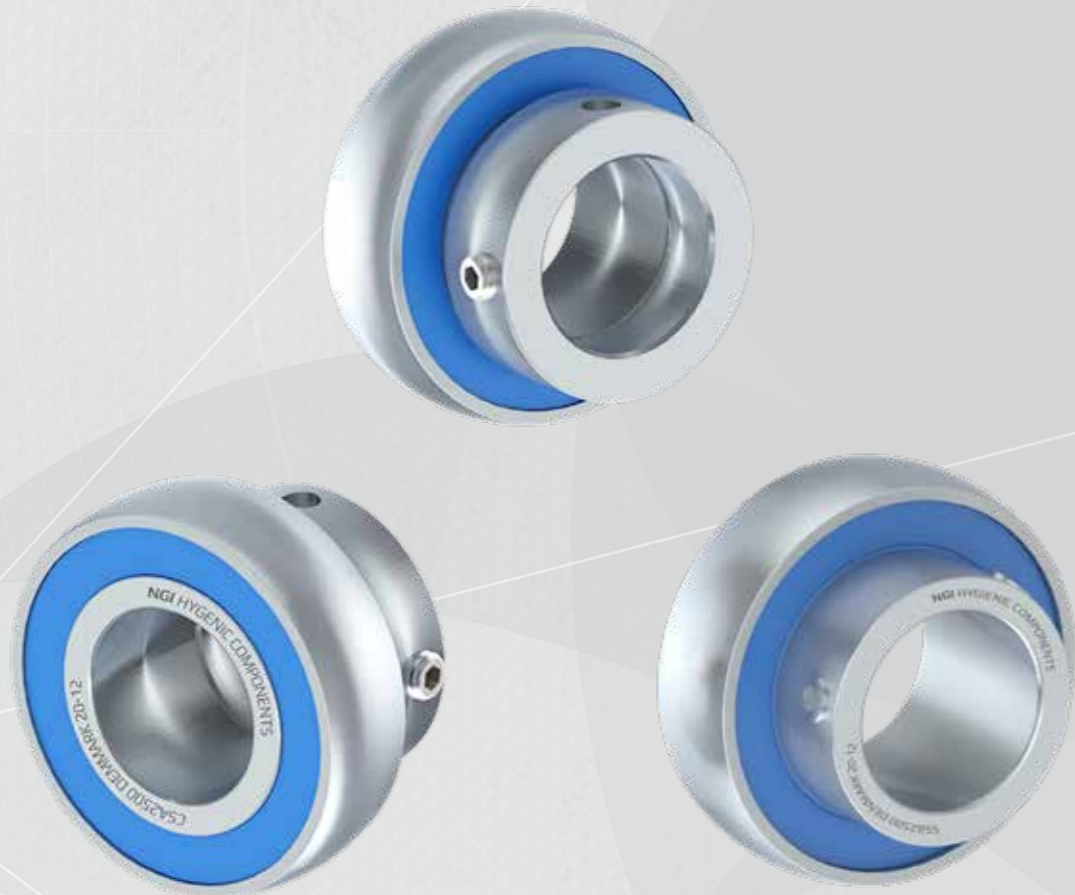
-  CERTIFIED HYGIENIC
-  MINIMIZED CLEANING TIME
-  MINIMIZED WATER USAGE

We produce stainless steel AISI 440 and ceramic hybrid high performance insert bearings of the highest quality. Seals are made from FDA blue NBR.

Research based on the analysis of 1.000 bearings shows that 99,6% of ceramic bearings last at least 4 times longer than standard bearings.

In 50% of the cases, the service life of the bearing was between 8-20 times longer than the bearings they replaced.

In 30% of the cases, it is expected that the ceramic bearings will never need to be replaced for the entire service life of the machine.



CERTIFIED HYGIENIC BEARINGS



SSB

Special Features

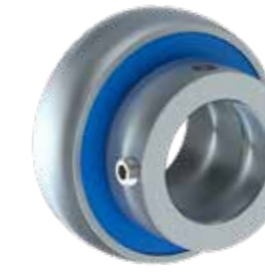
- Stainless Steel Bearing
- AISI 440 balls
- AISI 440 rings



CSB

Special Features

- Ceramic Bearing
- Hybrid with ceramic balls
- AISI 440 rings



SSA

Special Features

- Stainless Steel Bearing
- AISI 440 balls
- AISI 440 rings
- Eccentric locking collar



CSA

Special Features

- Ceramic Bearing
- Hybrid with ceramic balls
- AISI 440 rings
- Eccentric locking collar

STAINLESS STEEL OR CERAMIC HYBRID HYGIENIC BEARINGS



Our bearings are pre-installed in the bearing houses and we currently offer 4 types - stainless steel or ceramic hybrid bearing with screws or locking collar.

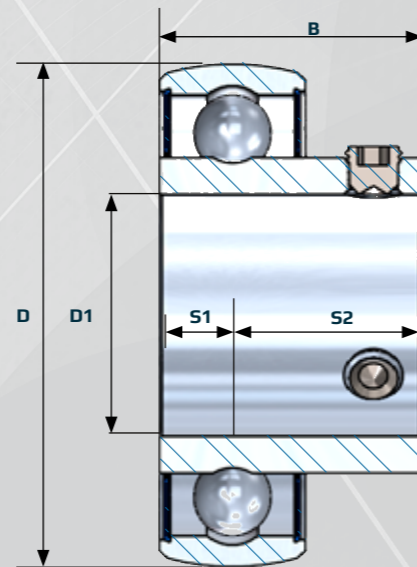
Our certified hygienic bearing houses with IP69K sealing provide the ideal environment for the bearing and are therefore suitable for maintenance-free operation.

The main operating parameters that determine the lifetime of the bearing are bearing type and size, load, speed, operating temperature, shaft tolerances.

Our ball bearings are greased-for-life with high-performance multi-purpose grease designed specifically for the lubrication of food processing machinery all sealed-for-life by seals made from FDA-approved blue NBR.

The locking method with screws is the most common locking function.

Bearings with an eccentric locking collar are intended primarily for use in applications where the direction of rotation is constant. On one side of the bearing inner ring is an eccentric extension that fits the locking collar.



HYGIENIC BEARINGS STAINLESS STEEL OR CERAMIC HYBRID



BEARING BALL	LOCKING FUNCTION	SIZE D [mm]	SHAFT DIAMETER D1 [mm]	WIDTH B [mm]	DISTANCE S1 [mm]	STATIC LOAD RATING CO [N]	DYNAMIC LOAD RATING C [N]	MAXIMUM SPEED [R/MIN.]	ITEM CODE
STAINLESS STEEL AISI 420	WITH SCREWS	47	20*	25	18	-	-	-	SSB2000
	WITH SCREWS	52	25	27	19,5	5970	11310	4200	SSB2500
	WITH SCREWS	62	30	30	22	8640	15730	3780	SSB3000
	WITH SCREWS	72	35*	34	24,5	-	-	-	SSB3500
	WITH SCREWS	80	40*	37	26,5	-	-	-	SSB4000
	WITH LOCKING COLLAR	47	20*	25	18	-	-	-	SSA2000
	WITH LOCKING COLLAR	52	25	27	19,5	5970	11310	4200	SSA2500
	WITH LOCKING COLLAR	62	30	30	22	8640	15730	3780	SSA3000
	WITH LOCKING COLLAR	72	35*	34	24,5	-	-	-	SSA3500
	WITH LOCKING COLLAR	80	40*	37	26,5	-	-	-	SSA4000

BEARING BALL	LOCKING FUNCTION	SIZE D [mm]	SHAFT DIAMETER D1 [mm]	WIDTH B [mm]	DISTANCE S1 [mm]	STATIC LOAD RATING CO [N]	DYNAMIC LOAD RATING C [N]	MAXIMUM SPEED [R/MIN.]	ITEM CODE
CERAMIC HYBRID	WITH SCREWS	47	20*	25	18	-	-	-	CSB2000
	WITH SCREWS	52	25	27	19,5	5970	11310	4200	CSB2500
	WITH SCREWS	62	30	30	22	8640	15730	3780	CSB3000
	WITH SCREWS	72	35*	34	24,5	-	-	-	CSB3500
	WITH SCREWS	80	40*	37	26,5	-	-	-	CSB4000
	WITH LOCKING COLLAR	47	20*	25	18	-	-	-	CSA2000
	WITH LOCKING COLLAR	52	25	27	19,5	5970	11310	4200	CSA2500
	WITH LOCKING COLLAR	62	30	30	22	8640	15730	3780	CSA3000
	WITH LOCKING COLLAR	72	35*	34	24,5	-	-	-	CSA3500
	WITH LOCKING COLLAR	80	40*	37	26,5	-	-	-	CSA4000



* The above marked bearings will not be available until summer/autumn 2021, however, you can already now place an order for the products and we will ship them as soon as the bearing houses are on stock.



CERTIFIED HYGIENIC BOLTS & NUTS



CERTIFIED HYGIENIC



MINIMIZED CLEANING TIME



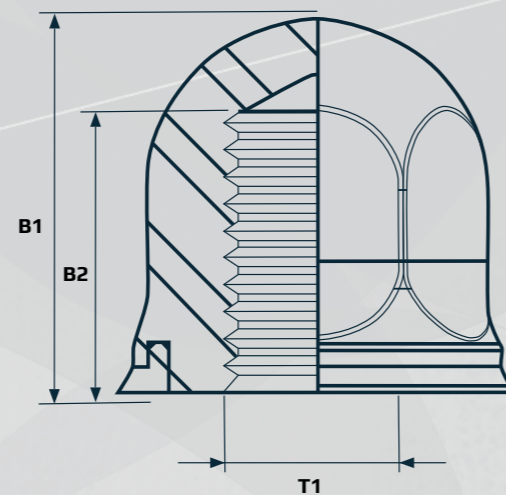
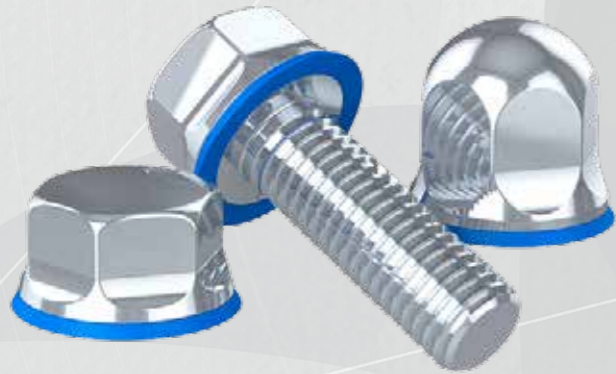
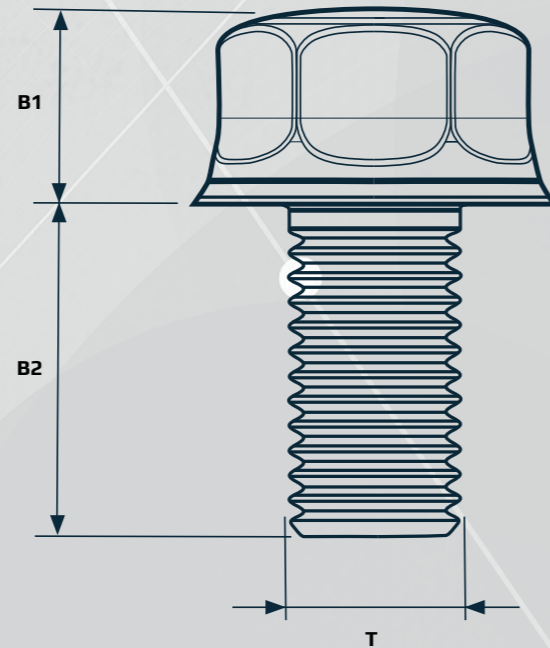
MINIMIZED WATER USAGE

NGI is able to offer certified hygienic bolts and nuts with blue NBR rubber seals. The NBR rubber seal blocks out water and bacteria and also prevents a non-hygienic metal-to-metal assembly.

The bolts and nuts have self-draining surfaces with a maximal roughness of 0.8 µm Ra. The design of the bolts and nuts does not deviate from the sizes of current standard bolts and nuts. Therefore, wrench sizes, thread heights etc. all remains the same making it very easy to upgrade and replace standard bolts.

This is the right choice of accessories to be used on all machinery in all certified hygienic wash-down environments.

- Certified in accordance with 3-A (RPSCQC)
- Certified in accordance with EHEDG hygienic standard TYPE EL - CLASS I AUX
- Minimizes cleaning time and water consumption
- Surfaces with a maximal roughness of 0,8 µm Ra
- Available in sizes M5-M24



CERTIFIED HYGIENIC ACCESSORIES BOLTS & NUTS



CERTIFIED HYGIENIC BOLTS - BXH



SIZE A [mm]	BOLT SIZE T	HEAD HEIGHT B1 [mm]	BOLT LENGTH* B2 [mm]	PLATE THICKNESS [mm]	W [mm]	TIGHTENING TORQUE [Nm]	OUTER NUT DIAMETER [mm]	ITEM CODE
47	M10	12	50	1-5	16	38	21,1	BXHM1050
47	M10	12	55	5-10	16	38	21,1	BXHM1055
52	M10	12	50	1-5	16	38	21,1	BXHM1050
52	M10	12	55	5-10	16	38	21,1	BXHM1055
62	M10	12	55	1-5	16	38	21,1	BXHM1055
62	M10	12	60	5-10	16	38	21,1	BXHM1060
72	M12	14	60	1-5	18	68	25,8	BXHM1260
72	M12	14	65	5-10	18	68	25,8	BXHM1265
80	M12	14	65	1-5	18	68	25,8	BXHM1265
80	M12	14	70	5-10	18	68	25,8	BXHM1270

CERTIFIED HYGIENIC DOME-HEADED NUT - NDXH



THREAD T1	TIGHTENING TORQUE [Nm]	TOTAL HEIGHT B1 [mm]	THREAD LENGTH B2 [mm]	W [mm]	OUTER NUT DIAMETER [mm]	ITEM CODE
M10	38	19,9	15	16	21,1	NDXH-M10
M12	68	24,5	18	18	25,8	NDXH-M12



* Bearing can be supplied with certified hygienic bolts. More bolt lengths are available, contact NGI for other options.

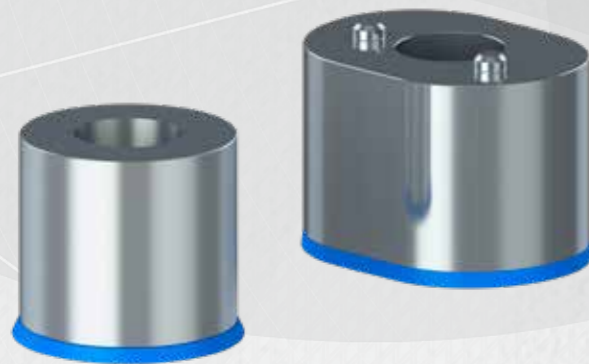
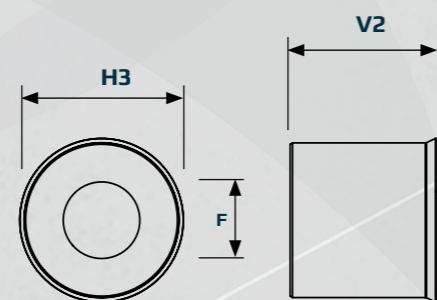
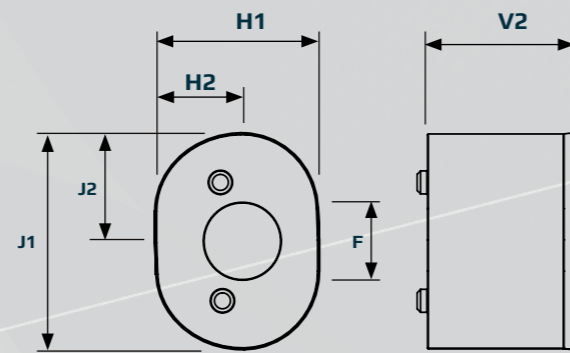
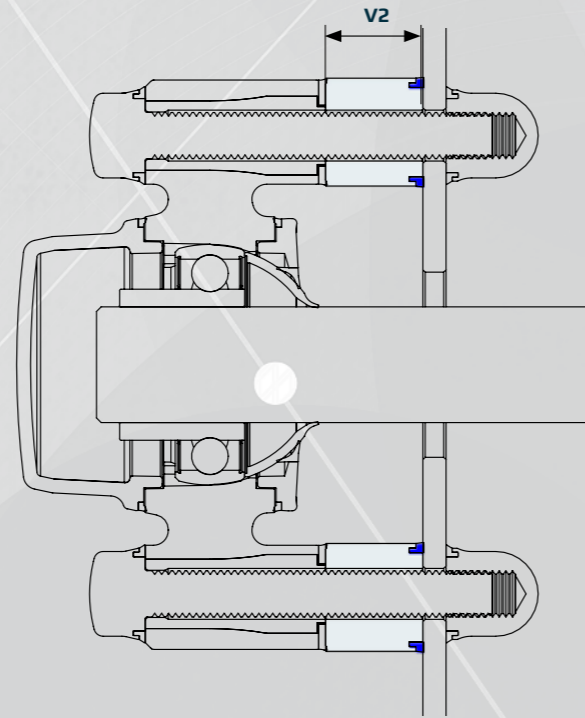
CERTIFIED HYGIENIC BEARING HOUSES SPACERS

-  CERTIFIED HYGIENIC
-  MINIMIZED CLEANING TIME
-  MINIMIZED WATER USAGE

A high focus on hygienic design ensures that the bearing house can be cleaned behind and around the shaft and furthermore, NGI offers hygienic spacers to increase the distance to machines and equipment to over an inch as recommended by USDA.

NGI bearing houses are USDA certified.

Contact NGI to learn more about the hygienic spacers for bearing houses at www.ngi-global.com



CERTIFIED HYGIENIC BEARING HOUSES SPACERS



OVAL SPACER

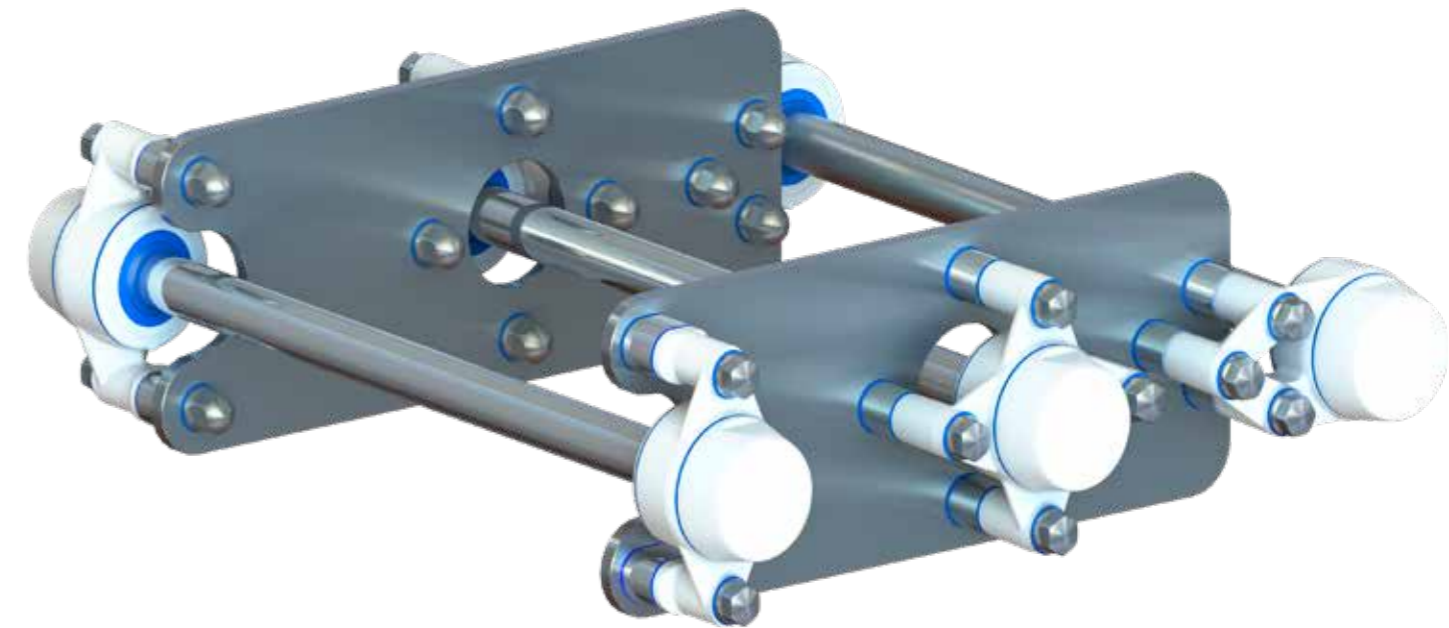


BEARING HOUSE SIZE	A [mm]	V2 [mm]	F [mm]	H1 [mm]	H2 [mm]	J1 [mm]	J2 [mm]
52	52	19	11	23,5	12,5	31,2	15,6
62	62	19	11	27,5	14,5	37,2	18,6

ROUND SPACER



BEARING HOUSE SIZE	A [mm]	V2 [mm]	F [mm]	H3 [mm]
52	52	22	11	22,2
62	62	22,5	11	26



DECLARATION OF CONFORMITY BEARING HOUSES

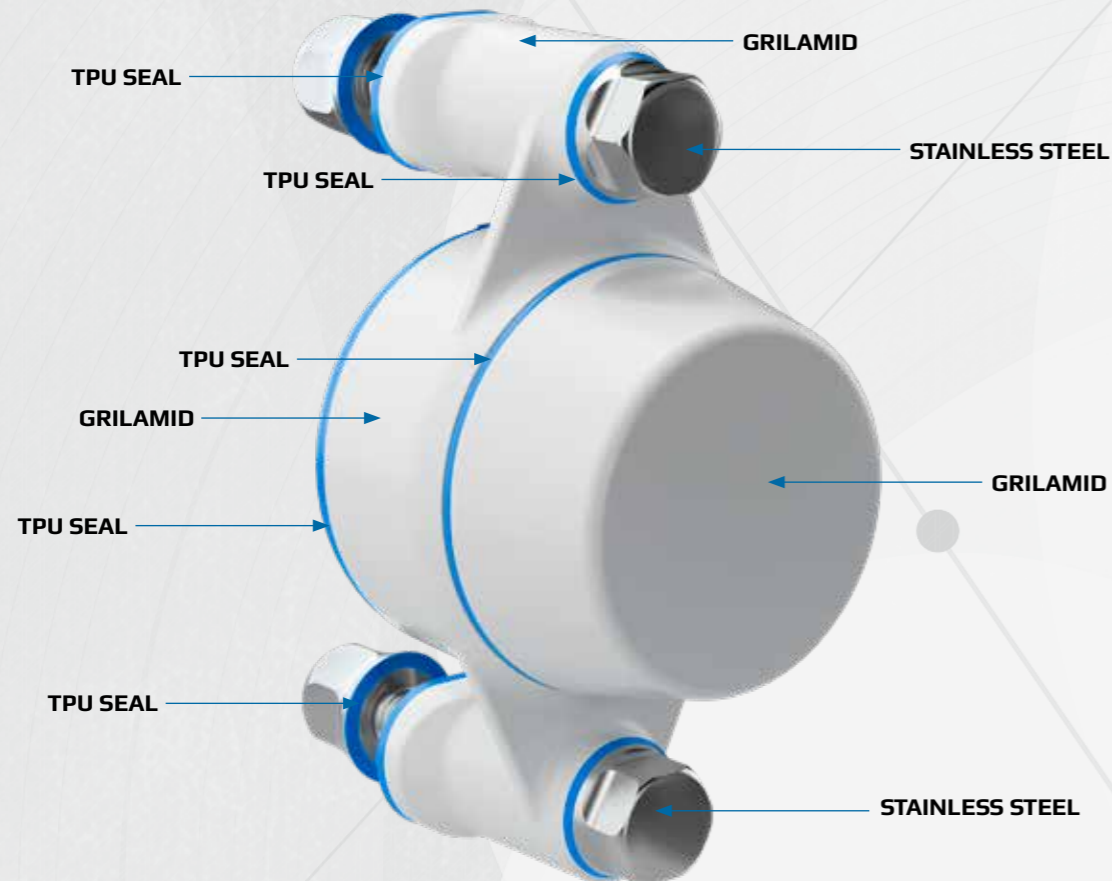
-  CERTIFIED HYGIENIC
-  MINIMIZED CLEANING TIME
-  MINIMIZED WATER USAGE



NGI fundamentally adheres to all applicable directives and standards. All information is based on the current state of knowledge and is subject to change. We attentively follow the revisions and amendments to these directives and will design our products accordingly. This ensures that products from NGI are always in compliance with currently valid requirements.

Our product category is not covered by the scope of application of the EC directive for machinery. For this reason, they cannot be furnished with the CE marking in accordance with the EC directive for machinery.

Furthermore, we declare that the listed materials applied in our products comply with the demands for materials used within the food and pharmaceutical industries.

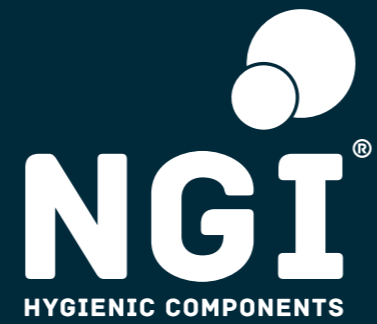


DECLARATION OF CONFORMITY BEARING HOUSES



The declaration of materials concerns the following Applications

<p>Application: Material type:</p> <p>Compliance:</p>	<p>Insert bearings Stainless steel, AISI 440C (X105CrMo17), Euronorm 1.4125. By request: Ceramic balls NBR rubber seals "Materials and articles to come in contact with food" 1935:2004/EC This certification is based on relevant information supplied by the material manufactures.</p>
<p>Application: Material type: Material type bolts Material type seals Compliance:</p>	<p>Hygienic bolts: Stainless steel AISI 316/A4 (A4 (X 5 CrNiMo 17 12 2), Euronorm 1.4401 EN 10204 TYPE 2.2. Silicon rubber See conformity statement for NGI certified hygienic bolts</p>
<p>Application: Material type: Electrically: Chemical resistance: Color: Range of temperature: Storage:</p> <p>Compliance:</p> <p>FDA: RoHS 2: European Community: Water resistance:</p>	<p>Bearing house & covers Grilamid frame, TPU seals Non-conductive High to commonly applied cleaning agents RAL 9010 (white) body, RAL 5010 (blue) seals Min -35°C to Max +125 °C According to ISO 2230</p> <p>Mounting according to ISO norm 3228:2013 Bearing compatibility according to ISO norm 9628:2006</p> <p>Guideline 21 CFR 177.2600 In accordance with the Directive 2011/65/EC OF EUROPEAN PARLIAMENT AND OF THE COUNCIL. "Materials and articles to come in contact with food" - 1935:2004/EC "Plastic materials and articles intended to come in contact with food" - 10:2011/EC IP69 Water resistant 7 atm or 70 meters.</p>



THANKS FOR YOUR INTEREST

Go to www.ngi-global.com/bearinghouses
to read more



NGI DENMARK (MAIN OFFICE)

NGI A/S
Virkelyst 5
DK-9400 Nørresundby
Denmark

Phone: +45 98 17 45 00
E-mail: ngi@ngi.dk

NGI USA

805 Satellite Blvd
Suwanee, GA 30024
USA

Phone: + 1 (646) 201 9410

NGI ITALY

Via Guglielmo Jervis 4
10015 IVREA TO
Italy

Phone: +39 0775 68 70 10

NGI SPAIN

Rambla Catalunya 81, 5-4
08008 Barcelona
Spain

Phone: +34 661 27 95 04



ALL NGI HYGIENIC COMPONENTS ARE
DESIGN AND PATENT PROTECTED