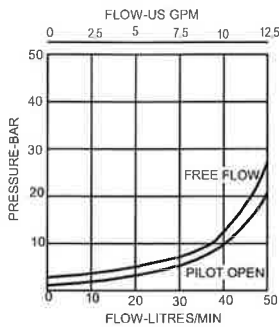
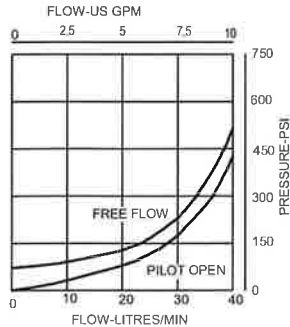


## PRESSURE DROP

### 2.5:1 & 5:1 version

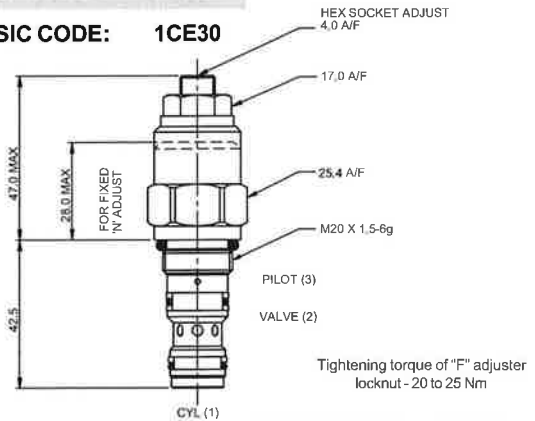


### 10:1 version



## CARTRIDGE ONLY

### BASIC CODE: 1CE30

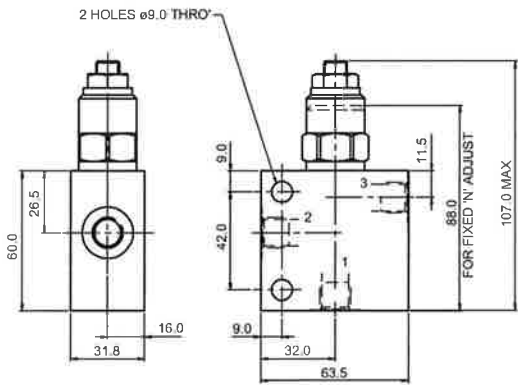


## SINGLE VALVE

### BASIC CODE: 1CE35

#### Body ONLY part numbers

BSP, aluminium	SAE, aluminium	BSP, steel	SAE, steel
3/8" B6743	3/8" B10536	3/8" B12823	1/2" B11811
	1/2" B7884		

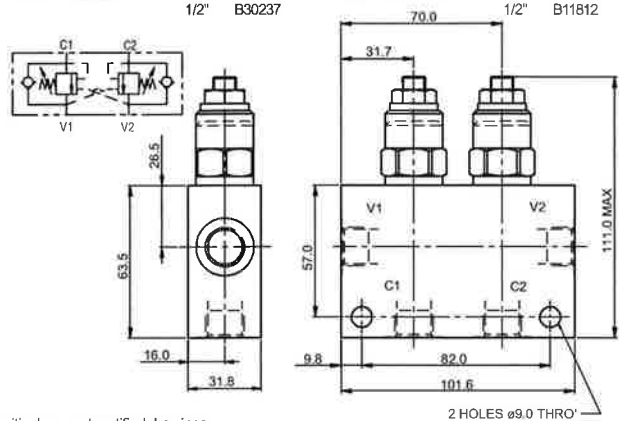


## DUAL VALVE

### BASIC CODE: 1CEE34 (INTERNALLY CROSSED PILOTED)

#### Body ONLY part numbers

BSP, aluminium	SAE, aluminium	BSP, steel	SAE, steel
3/8" B6836	3/8" B10805	3/8" B13803	1/2" B11812
	1/2" B30237		



Where measurements are critical request certified drawings

## ORDERING CODE EXAMPLE

**1CE\*\*\* F 3W 35 S 5**

#### Basic Code

- 1CE30 = Cartridge Only
- 1CE35 = Cartridge and Body
- 1CEE34 = Cartridges and Dual Body

#### Adjustment Means

- F = Screw Adjustment
- N = Fixed - State pressure setting required
- For fixed versions add setting in 10 bar increments to end of part number. Subject to a ±10% tolerance.

#### Port Sizes - Bodied Valves Only

- 3W = 3/8" BSP Valve & Cyl Port. 1/4" BSP Pilot Port
- 6T = 3/8" SAE Valve & Cyl Port. 1/4" SAE Pilot Port
- 8T = 1/2" SAE Valve & Cyl Port. 1/4" SAE Pilot Port

#### Pressure Range @ 4.8 l/min

- 20 = (2.5:1 and 5:1): 70-210 bar. Std setting 100 bar
- (10:1): 100-210 bar. Std setting 100 bar
- 35 = (2.5:1 and 5:1): 100-350 bar. Std setting 210 bar
- (10:1): 120-350 bar. Std setting 210 bar

Std setting made at 4.8 litres/min

Other pressure ranges available on request

We reserve the right to change specifications without notice

#### Pilot Ratio

- 2 = 2.5:1
- 5 = 5:1 (Standard)
- 10 = 10:1

#### Seals

- S = Nitrile (For use with most industrial hydraulic oils)
- SV = Viton (For high temperature and most special fluid applications)