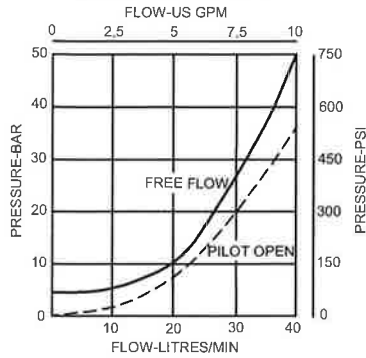
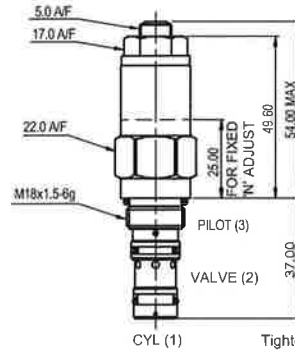


PRESSURE DROP



CARTRIDGE ONLY

BASIC CODE: 1CE20



Tightening torque of "F" adjuster locknut - 20 to 25 Nm

SINGLE VALVE

3/8" PORTS

BASIC CODE: 1CE25

Body ONLY part numbers

BSP, aluminium	SAE, aluminium	BSP, steel	SAE, steel
3/8" B24255	3/8" B24257	3/8" B24254	3/8" B24256

DUAL VALVE

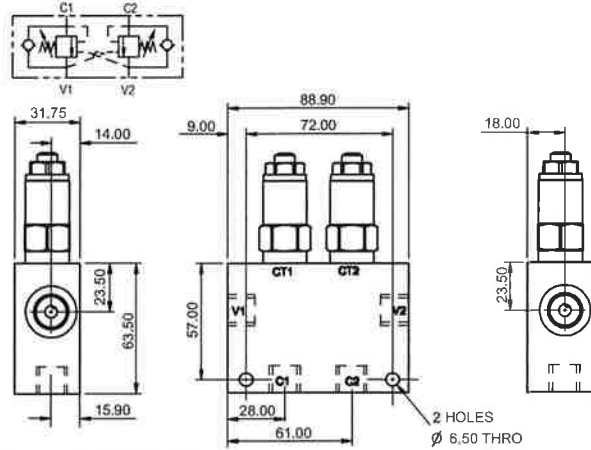
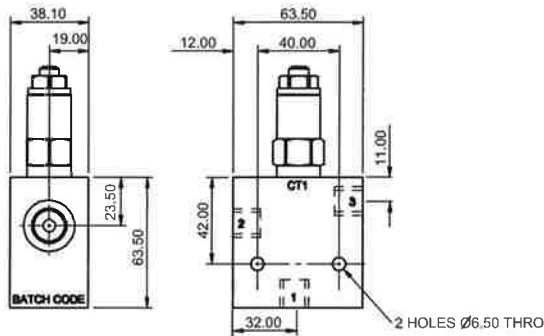
3/8" PORTS

BASIC CODE: 1CEE24

(INTERNALLY CROSSED PILOTED)

Body ONLY part numbers

BSP, aluminium	SAE, aluminium	BSP, steel	SAE, steel
3/8" B24261	3/8" B24264	3/8" B24260	3/8" B24263



Where measurements are critical request certified drawings

ORDERING CODE EXAMPLE

1CE* F 3W 35 S 3**

Basic Code

- 1CE20 = Cartridge Only
- 1CE25 = Cartridge and Body
- 1CEE24 = Cartridges and Dual Body

Adjustment Means

- F = Screw Adjustment
- N = Fixed - State pressure setting required
- For fixed versions add setting in 10 bar increments to end of part number. Subject to a ±10% tolerance.

Port Sizes - Bodied Valves Only

- 3W = 3/8" BSP Valve & Cyl Port, 1/4" BSP Pilot Port
- 6T = 3/8" SAE Valve & Cyl Port, 1/4" SAE Pilot Port

Pressure Range @ 4.8 l/min

- 20 = 100-230 bar, Std setting 140 bar
- 35 = 200-350 bar, Std setting 210 bar
- Std setting made at 4.8 litres/min
- Other pressure ranges available on request

Pilot Ratio

- 3 = 3:1
- 4 = 4.5:1
- 8 = 8:1

Seals

- S = Nitrile (For use with most industrial hydraulic oils)
- SV = Viton (For high temperature and most special fluid applications)

We reserve the right to change specifications without notice