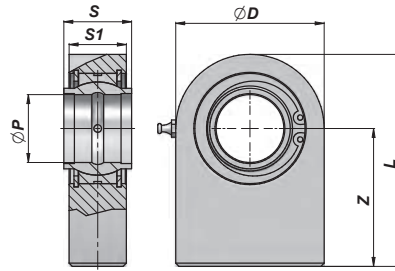
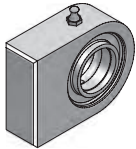


CSTSCE...N

TERMINALE A SNODO RILUBRIFICABILE
BALL-JOINT END WITH GREASE NIPPLE



| Codice Code | ØP | Z | S | ØD | S1 | L | FC (kN) | kg |
|----------------|-----|-----|-----|-----|----|-------|---------|-------|
| CSTSCE720N | 20 | 38 | 20 | 50 | 19 | 63.0 | 30.0 | 0,36 |
| CSTSCE725N | 25 | 45 | 25 | 55 | 23 | 72.5 | 48.0 | 0,54 |
| CSTSCE732N | 32 | 65 | 32 | 70 | 27 | 103.0 | 62.5 | 1,12 |
| CSTSCE740N | 40 | 69 | 40 | 100 | 35 | 119.0 | 100.0 | 2,50 |
| CSTSCE750N | 50 | 88 | 50 | 123 | 40 | 149.5 | 156.0 | 4,60 |
| CSTSCE763N | 63 | 107 | 63 | 145 | 50 | 178.0 | 248.0 | 9,30 |
| CSTSCE770N | 70 | 115 | 70 | 164 | 55 | 197.0 | 315.0 | 11,25 |
| CSTSCE780N | 80 | 141 | 80 | 180 | 60 | 231.0 | 400.0 | 15,75 |
| CSTSCE790N (1) | 90 | 150 | 90 | 226 | 65 | 263.0 | 490.0 | 24,00 |
| CSTSCE795N (1) | 100 | 170 | 100 | 250 | 70 | 295.0 | 610.0 | 33,95 |
| CSTSCE796N (1) | 110 | 185 | 110 | 295 | 80 | 332.5 | 655.0 | 49,00 |
| CSTSCE797N (1) | 125 | 210 | 125 | 360 | 90 | 390.0 | 950.0 | 81,00 |

FC = CARICO DINAMICO AMMESSO - MAX DYNAMIC LOAD

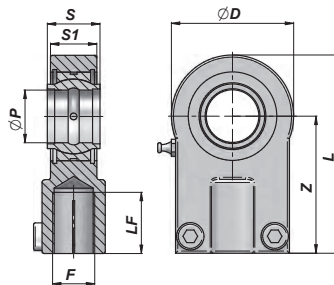
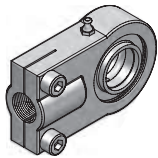
(1) = PANTOGRAFATI - PROFILE PLATE

MATERIALE : ACCIAIO ISO 12240-1 SERIE W

MATERIAL : STEEL ISO 12240-1 SERIES W

CSTAPR...CE

TERMINALE A SNODO RILUBRIFICABILE
BALL-JOINT END WITH GREASE NIPPLE



| Codice Code | ØP | Z | S | ØD | S1 | L | F | LF | FC (kN) | kg |
|--------------------|-----|-----|-----|-----|-----|-------|----------|-----|---------|-------|
| *CSTAPR612C | 12 | 38 | 12 | 32 | 11 | 54 | M12x1,25 | 17 | 10.8 | 0,11 |
| CSTAPR616C | 16 | 44 | 16 | 40 | 13 | 64 | M14x1,5 | 19 | 17.6 | 0,20 |
| CSTAPR620C | 20 | 52 | 20 | 47 | 17 | 77 | M16x1,5 | 23 | 30.0 | 0,35 |
| CSTAPR625C | 25 | 65 | 25 | 58 | 22 | 96 | M20x1,5 | 29 | 48.0 | 0,62 |
| CSTAPR632C | 32 | 80 | 32 | 71 | 28 | 118 | M27x2 | 37 | 67.0 | 1,15 |
| CSTAPR640C | 40 | 97 | 40 | 90 | 33 | 146 | M33x2 | 46 | 100.0 | 2,18 |
| CSTAPR650C | 50 | 120 | 50 | 109 | 41 | 179 | M42x2 | 57 | 156.0 | 3,96 |
| CSTAPR663C | 63 | 140 | 63 | 136 | 53 | 213 | M48x2 | 64 | 255.0 | 6,80 |
| CSTAPR670C (**)(A) | 70 | 160 | 70 | 155 | 57 | 245 | M56x2 | 76 | 315.0 | 9,60 |
| CSTAPR680C (**)(A) | 80 | 180 | 80 | 170 | 67 | 270 | M64x3 | 86 | 400.0 | 13,00 |
| CSTAPR690C (**)(A) | 90 | 195 | 90 | 185 | 72 | 296 | M72x3 | 91 | 490.0 | 19,10 |
| CSTAPR695C (**)(A) | 100 | 210 | 100 | 211 | 85 | 322 | M80x3 | 96 | 610.0 | 25,00 |
| CSTAPR696C (**)(A) | 110 | 235 | 110 | 235 | 88 | 364 | M90x3 | 106 | 655.0 | 32,00 |
| CSTAPR697C (**)(A) | 125 | 260 | 125 | 265 | 103 | 406,5 | M100x3 | 113 | 950.0 | 46,00 |

FC = CARICO DINAMICO AMMESSO - MAX DYNAMIC LOAD

(A) = FUORI NORMATIVA - OUT OF RULE

* = NON RILUBRIFICABILE - WITHOUT GREASE NIPPLE

MATERIALE : ACCIAIO DIN 24338 - ISO 6982 - ISO 8132 - (**)= GHISA SFEROIDALE

MATERIAL : STEEL DIN 24338 - ISO 6982 - ISO 8132 - (**)= NODULAR CAST IRON