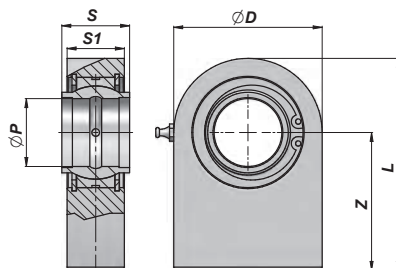
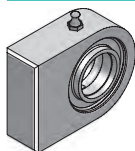


**CSTSCE...N**

TERMINALE A SNODO RILUBRIFICABILE  
BALL-JOINT END WITH GREASE NIPPLE



Codice Code	ØP	Z	S	ØD	S1	L	FC (kN)	kg
CSTSCE720N	20	38	20	50	19	63.0	30.0	0,36
CSTSCE725N	25	45	25	55	23	72.5	48.0	0,54
CSTSCE732N	32	65	32	70	27	103.0	62.5	1,12
CSTSCE740N	40	69	40	100	35	119.0	100.0	2,50
CSTSCE750N	50	88	50	123	40	149.5	156.0	4,60
CSTSCE763N	63	107	63	145	50	178.0	248.0	9,30
CSTSCE770N	70	115	70	164	55	197.0	315.0	11,25
CSTSCE780N	80	141	80	180	60	231.0	400.0	15,75
CSTSCE790N (1)	90	150	90	226	65	263.0	490.0	24,00
CSTSCE795N (1)	100	170	100	250	70	295.0	610.0	33,95
CSTSCE796N (1)	110	185	110	295	80	332.5	655.0	49,00
CSTSCE797N (1)	125	210	125	360	90	390.0	950.0	81,00

FC = CARICO DINAMICO AMMESSO - MAX DYNAMIC LOAD

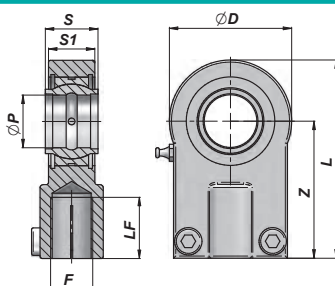
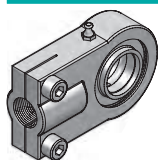
(1) = PANTOGRAFATI - PROFILE PLATE

MATERIALE : ACCIAIO ISO 12240-1 SERIE W

MATERIAL : STEEL ISO 12240-1 SERIES W

**CSTAPR...CE**

TERMINALE A SNODO RILUBRIFICABILE  
BALL-JOINT END WITH GREASE NIPPLE



Codice Code	ØP	Z	S	ØD	S1	L	F	LF	FC (kN)	kg
*CSTAPR612C	12	38	12	32	11	54	M12x1,25	17	10.8	0,11
CSTAPR616C	16	44	16	40	13	64	M14x1,5	19	17.6	0,20
CSTAPR620C	20	52	20	47	17	77	M16x1,5	23	30.0	0,35
CSTAPR625C	25	65	25	58	22	96	M20x1,5	29	48.0	0,62
CSTAPR632C	32	80	32	71	28	118	M27x2	37	67.0	1,15
CSTAPR640C	40	97	40	90	33	146	M33x2	46	100.0	2,18
CSTAPR650C	50	120	50	109	41	179	M42x2	57	156.0	3,96
CSTAPR663C	63	140	63	136	53	213	M48x2	64	255.0	6,80
CSTAPR670C (**)(A)	70	160	70	155	57	245	M56x2	76	315.0	9,60
CSTAPR680C (**)(A)	80	180	80	170	67	270	M64x3	86	400.0	13,00
CSTAPR690C (**)(A)	90	195	90	185	72	296	M72x3	91	490.0	19,10
CSTAPR695C (**)(A)	100	210	100	211	85	322	M80x3	96	610.0	25,00
CSTAPR696C (**)(A)	110	235	110	235	88	364	M90x3	106	655.0	32,00
CSTAPR697C (**)(A)	125	260	125	265	103	406,5	M100x3	113	950.0	46,00

FC = CARICO DINAMICO AMMESSO - MAX DYNAMIC LOAD

(A) = FUORI NORMATIVA - OUT OF RULE

\* = NON RILUBRIFICABILE - WITHOUT GREASE NIPPLE

MATERIALE : ACCIAIO DIN 24338 - ISO 6982 - ISO 8132 - (\*\*)= GHISA SFEROIDALE

MATERIAL : STEEL DIN 24338 - ISO 6982 - ISO 8132 - (\*\*)= NODULAR CAST IRON