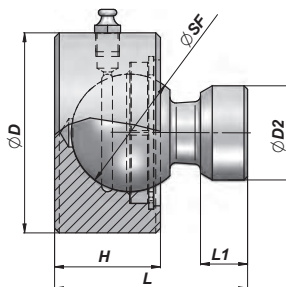
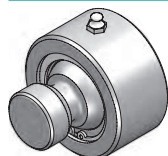


CSB

**BASE OSCILLANTE
SWINGING END**



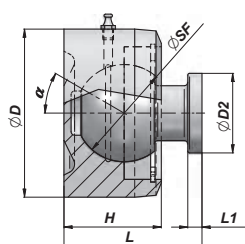
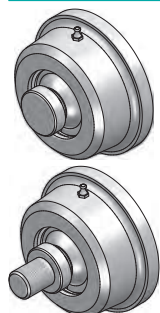
Codice Code	ØSF	ØD2	ØD	L	H	L1	α	FC (KN)	kg
CSB0500000	50	40	85	82	45	20	38	68.6	2,20
CSB0600000	60	50	98	100	50	25	40	107.8	3,40
CSB0700000	70	60	105	115	60	30	38	132.3	4,80

FC = CARICO DINAMICO AMMESSO - MAX DYNAMIC LOAD

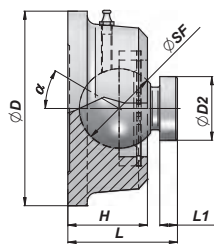
MATERIALE : ACCIAIO UNI C40
MATERIAL : STEEL UNI C40

CSB00

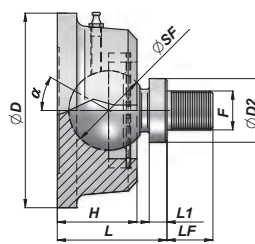
**BASE OSCILLANTE
SWINGING END**



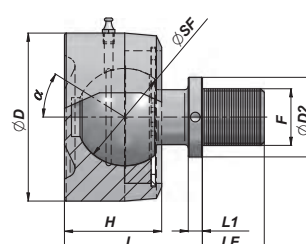
TYPE A



TYPE B

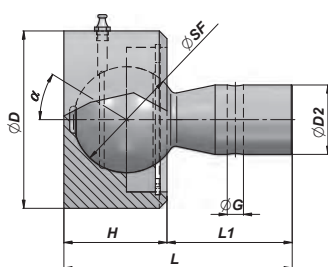
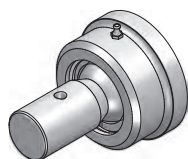


TYPE C

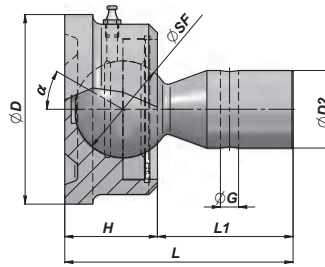


TYPE D

Codice Code	TYPE	ØSF	ØD2	ØD	L	H	L1	F	L1F	α	FC (KN)	kg
CSB0001980	B	45	30	110	62	45	9			35	107.8	2,20
CSB0001982	A	55	45	95	78	55	8			30	147.0	2,88
CSB0001984	B	65	64	107	88	58	9			30	225.5	3,96
CSB0001986	C	45	30	110	61	45		M22x1.5	26	32	107.8	2,28
CSB0001988	D	55	45	95	78	55		M32x2	35	30	147.0	3,10



TYPE A



TYPE B

Codice Code	TYPE	ØSF	ØD2	ØD	L	H	L1	ØG	α	FC (KN)	kg
CSB0001700 (*)	B	45	36	88	106.0	43.0	63	-	22	78.4	2,18
CSB0001701 (*)	B	45	36	88	106.0	43.0	63	8.4	36	78.4	2,40
CSB0001702 (*)	A	55	36	92	118.5	53.5	65	8.4	33	137.2	3,10

FC = CARICO DINAMICO AMMESSO - MAX DYNAMIC LOAD

(*) = L'INGRASSATORE E' INCLINATO DI CIRCA 6° PER FAVORIRE L'INGRASSAGGIO

(*) = GREASE NIPPLE IS TILTED OF ABOUT 6° TO FACILITATE GREASING

MATERIALE : ACCIAIO UNI C40
MATERIAL : STEEL UNI C40