

# ASCO™ Pilot Valve Boxes

Containing 2 to 12 Valves, 2/2 Normally Closed, Direct Operated, 1/8

2/2  
Series  
110

## Features

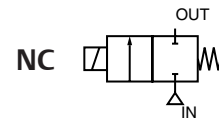
- Compact pilot boxes with direct operated, integrated pilot valves
- Especially designed for the remote control of pulse valves (series 353)
- Valve seats are integrated in base plate
- Common exhaust connection for just 1 or 2 (G 3/8") silencers
- Built-in heating elements for trouble free operation at low ambient temperatures
- Degree of protection: IP 65
- Facilities for integrated quick fittings
- The components satisfy all relevant EC directives



## General

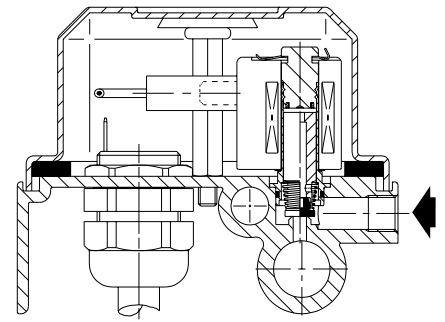
Differential pressure (PS) 0 to 8.5 bar [1 bar = 100kPa]  
Response times 5 - 25 ms

Fluid	Temperature Range (TS)	Seal Material
air	-20°C to +80°C	NBR (nitrile)



## Construction

Base-plate	Anodised aluminium
Cover	ABS (polysterene) UV stabilized
Core tube	Brass
Core and plugnut	Stainless steel
Spring	Stainless steel
Disc	NBR
Shading coil	Copper
Coil insulation class	F
Electrical connection	Spades according to DIN 46244



## Electrical Characteristics

Standard voltages DC (=) 24V; AC (~) 24V - 115V - 230V/50Hz

Coil Type	Nominal Power Ratings			Ambient Temperature Range (°C)	Protection	Replacement Coil	
	Inrush ~ (VA)	Holding ~ (VA)	Hot/Cold = (W)			~ 230 V/50 Hz	= 24 V DC
UCM22-FI <sup>(1)</sup>	20.4	14	10	-20 to +85 for AC -20 to +55 for DC	moulded IP65	400137-697	400137-642

(1) Intermittent duty, Relative Duty Time is 10%. Max on time is 1 min.

**Specifications**

Number of Pilot Valves	Pipe Size	Orifice Size	Flow Coefficient Kv		Operating Pressure Differential (bar)		Catalogue Number for the Boxes <sup>(1)</sup>		
					Min.	Max (PS)	without Heating	1 Heating Element <sup>(2)</sup>	2 Heating Elements <sup>(2)</sup>
						Air ~ =			
G	(mm)	(m <sup>3</sup> /h)	(l/min)						
2 3 4 5 6	1/8	3.6	0.35	5.8	0	8.5	SG110A020 SG110A030 SG110A040 SG110A050 SG110A060	SG110A021 SG110A031 SG110A041 SG110A051 SG110A061	- - - - -
7 8 9 10 11 12	1/8	3.6	0.35	5.8	0	8.5	SG110A070 SG110A080 SG110A090 SG110A100 SG110A110 SG110A120	SG110A071 SG110A081 SG110A091 SG110A101 SG110A111 SG110A121	SG110A072 SG110A082 SG110A092 SG110A102 SG110A112 SG110A122

(1) Minimum ambient temperature without heating elements : 0°C  
 Minimum ambient temperature with 1 heating element : -40°C (2 to 6 pilots)  
 : -15°C (7 to 12 pilots)  
 Minimum ambient temperature with 2 heating elements : -40°C (7 to 12 pilots)  
 (2) Heating element(s) 220-240 VDC / VAC 50-60 Hz standard, for other voltages see ordering information. Heating element(s) rating 80 watt each.

**Options**

- Pilot boxes with metal cover for harsh conditions and heavy duty applications (prefix: WP)
- Integrated quick fittings for 6 or 8 mm tubes
- Special customer adapted executions

**Installation**

- The pilot boxes can be mounted in any position without affecting operation
- Pipe connections are: G 1/8 according to ISO 228 for pilot connection  
 G 3/8 according to ISO 228 for common exhaust
- Cable entries: control cable on box with 2 - 6 pilot valves : cable Ø 10 - 14 mm  
 control cable on box with 7 - 12 pilot valves : cable Ø 13 - 18 mm  
 connection cable heating element : cable Ø 5 - 10 mm
- Installation/maintenance instructions are included with each pilot box
- Spare parts kit and replacement coils are available

**Spare Parts Kits**

Catalogue Number	Spare Parts Kit No. ~ =
SG110A020 up to 120	C127837
SG110A021 up to 121	
WPSG110A072 up to 122	

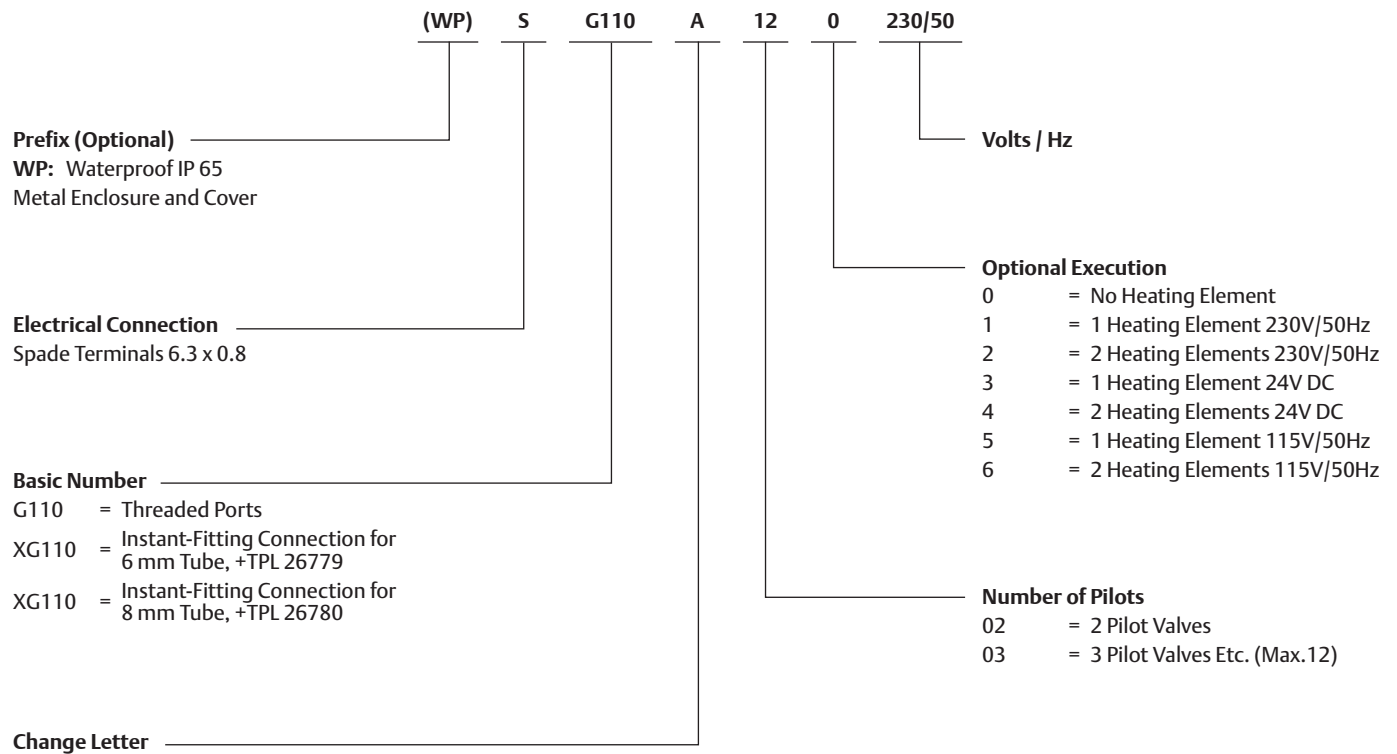
60200GB-2022/R01

# ASCO™ Pilot Valve Boxes

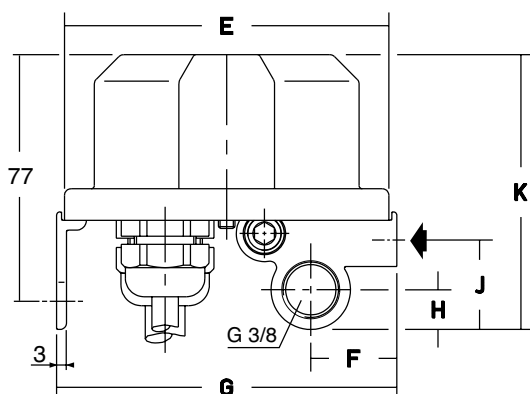
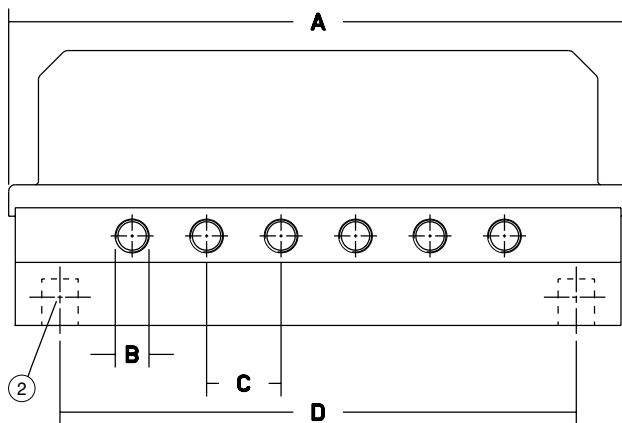
Containing 2 to 12 Valves, 2/2 Normally Closed, Direct Operated, 1/8

**2/2**  
Series  
**110**

## How to Order



## DIMENSIONS (mm), WEIGHT (kg)



Number of Pilot Valves	A	B	C	D	E	F	G	H	J	K	Weight <sup>(1)</sup>
2 to 6	187	G 1/8	22.5	156	98	26	103	12	27	83	1
7 to 12	322	G 1/8	22.5	266	98	26	103	12	27	83	2.2

(1) incl. coil and connector  
(2) mounting: 2 holes Ø10 with pitch D

60200GB-2022/R01